

**Product Name: Prothrombin Rabbit Monoclonal Antibody****Catalog #: AMRe83968**

For research use only.

**Summary**

<b>Description</b>	Recombinant rabbit monoclonal antibody
<b>Host</b>	Rabbit
<b>Application</b>	WB,IP
<b>Reactivity</b>	Human
<b>Conjugation</b>	Unconjugated
<b>Modification</b>	Unmodified
<b>Isotype</b>	IgG
<b>Clonality</b>	Monoclonal
<b>Form</b>	Liquid
<b>Concentration</b>	
<b>Storage</b>	Aliquot and store at -20°C (valid for 12 months). Avoid freeze/thaw cycles.
<b>Shipping</b>	Ice bags
<b>Buffer</b>	Purified antibody in PBS with 0.05% sodium azide, 0.05% protective protein and 50% glycerol.
<b>Purification</b>	Affinity Purification

**Application**

<b>Dilution Ratio</b>	WB 1:1000-1:2000, IP 1:20-1:50
<b>Molecular Weight</b>	70 kDa

**Antigen Information**

<b>Gene Name</b>	Prothrombin
<b>Alternative Names</b>	Coagulation factor II; F2; Factor II; Prepro coagulation factor II; Prothrombin; prothrombin B-chain; PT; RPRGL2; serine protease; THPH1; Thrombin heavy chain;;Prothrombin
<b>Gene ID</b>	
<b>SwissProt ID</b>	P00734
<b>Immunogen</b>	A synthesized peptide derived from human Prothrombin

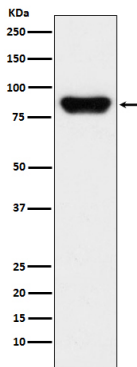
**Background**

Thrombin, which cleaves bonds after Arg and Lys, converts fibrinogen to fibrin and activates factors V, VII, VIII, XIII, and, in

complex with thrombomodulin, protein C. Functions in blood homeostasis, inflammation and wound healing.

## Research Area

## Image Data



Western blot analysis of Prothrombin expression in human serum lysate.