

**Product Name: ULK1 Rabbit Monoclonal Antibody**  
**Catalog #: AMRe83955**



## Summary

<b>Production Name</b>	ULK1 Rabbit Monoclonal Antibody
<b>Description</b>	Rabbit Monoclonal antibody
<b>Host</b>	Rabbit
<b>Application</b>	WB,IHC,ICC,IF
<b>Reactivity</b>	Human,Mouse,Rat

## Performance

<b>Conjugation</b>	Unconjugated
<b>Modification</b>	Unmodified
<b>Isotype</b>	IgG
<b>Clonality</b>	Monoclonal
<b>Form</b>	Liquid
<b>Storage</b>	Store at 4°C short term. Aliquot and store at -20°C long term. Avoid freeze/thaw cycles.
<b>Buffer</b>	Purified antibody in PBS with 0.05% sodium azide,0.05% protective protein and 50% glycerol.
<b>Purification</b>	Affinity Purification

## Immunogen

<b>Gene Name</b>	ULK1
<b>Alternative Names</b>	Serine/threonine-protein kinase ULK1; Autophagy-related protein 1 homolog; ATG1; Unc-51-like kinase 1; ULK1;;ULK1
<b>Gene ID</b>	
<b>SwissProt ID</b>	O75385.A synthesized peptide derived from human ULK1

## Application

<b>Dilution Ratio</b>	WB:1:1000-1:2000,IHC:1:100-1:200;IF:1:50-1:200,ICC:1:50-1:200
<b>Molecular Weight</b>	Calculated MW: 113 kDa ; Observed MW: 120 kDa

**Product Name: ULK1 Rabbit Monoclonal Antibody**  
**Catalog #: AMRe83955**

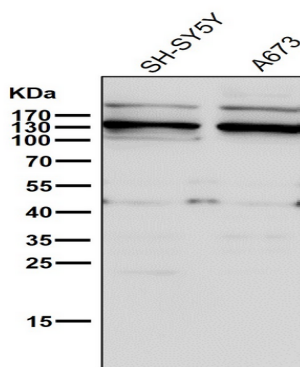


## Background

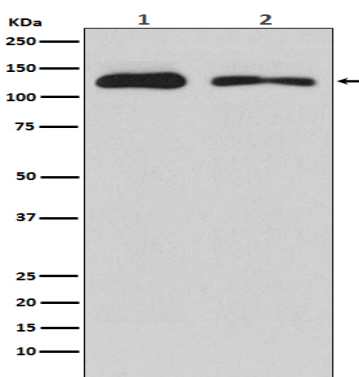
Serine/threonine-protein kinase involved in autophagy in response to starvation. Acts upstream of phosphatidylinositol 3-kinase PIK3C3 to regulate the formation of autophagophores, the precursors of autophagosomes.

## Research Area

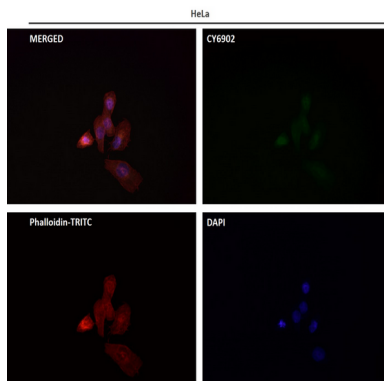
## Image Data



All lanes use the Antibody at 1:2K dilution for 1 hour at room temperature.



Western blot analysis of ULK1 expression in (1) HEK293 cell lysate; (2) PC12 cell lysate.

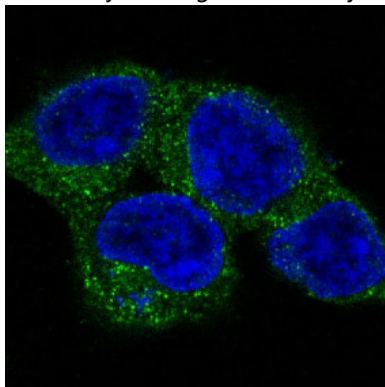


**Product Name: ULK1 Rabbit Monoclonal Antibody**  
**Catalog #: AMRe83955**

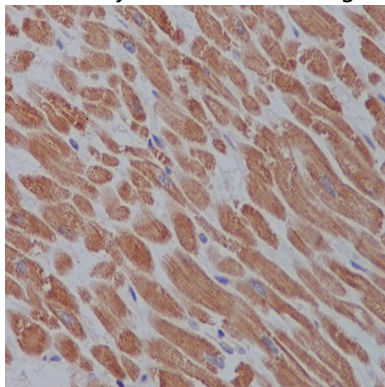
---



Immunofluorescent analysis using the Antibody at 1:100 dilution.



Immunofluorescent analysis of 293 cells, using ULK1 Antibody .



Immunohistochemical analysis of paraffin-embedded human heart, using ULK1 Antibody.

## **Note**

For research use only.