

Product Name: CaMKII delta Rabbit Monoclonal Antibody**Catalog #: AMRe83937**

For research use only.

Summary

Description	Recombinant rabbit monoclonal antibody
Host	Rabbit
Application	WB,IHC
Reactivity	Human,Mouse,Rat
Conjugation	Unconjugated
Modification	Unmodified
Isotype	IgG
Clonality	Monoclonal
Form	Liquid
Concentration	0.38mg/ml. The concentration of this product may be batch-dependent.
Storage	Aliquot and store at -20°C (valid for 12 months). Avoid freeze/thaw cycles.
Shipping	Ice bags
Buffer	Purified antibody in PBS with 0.05% sodium azide,0.05% protective protein and 50% glycerol.
Purification	Affinity Purification

Application

Dilution Ratio	WB 1:1000-1:2000,IHC 1:100-1:200
Molecular Weight	Calculated MW: 56 kDa ; Observed MW: 50 kDa

Antigen Information

Gene Name	CaMKII delta
Alternative Names	CAM kinase 2 delta; CAM kinase II delta; CaM kinase II delta subunit; CaM kinase II subunit delta; CAMK 2d; CaMK-II delta subunit; CAMK2D; CAMKI; ;CaMKII delta
Gene ID	
SwissProt ID	Q13557
Immunogen	A synthesized peptide derived from human CaMKII delta

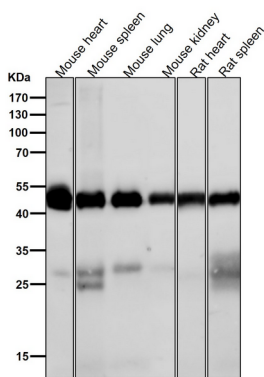
Background

Calcium/calmodulin-dependent protein kinase involved in the regulation of Ca²⁺ homeostasis and excitation-contraction

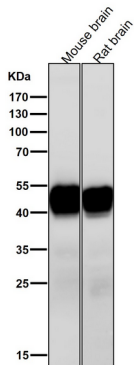
coupling (ECC) in heart by targeting ion channels, transporters and accessory proteins involved in Ca^{2+} influx into the myocyte, Ca^{2+} release from the sarcoplasmic reticulum (SR), SR Ca^{2+} uptake and Na^{+} and K^{+} channel transport. Targets also transcription factors and signaling molecules to regulate heart function. In its activated form, is involved in the pathogenesis of dilated cardiomyopathy and heart failure.

Research Area

Image Data



All lanes use the Antibody at 1:2K dilution for 1 hour at room temperature.



All lanes use the Antibody at 1:2K dilution for 1 hour at room temperature.