

Product Name: SOS1 Rabbit Monoclonal Antibody**Catalog #: AMRe83936**

For research use only.

Summary

Description	Recombinant rabbit monoclonal antibody
Host	Rabbit
Application	WB,IHC,ICC/IF,ICC
Reactivity	Human,Mouse,Rat
Conjugation	Unconjugated
Modification	Unmodified
Isotype	IgG
Clonality	Monoclonal
Form	Liquid
Concentration	0.59mg/ml. The concentration of this product may be batch-dependent.
Storage	Aliquot and store at -20°C (valid for 12 months). Avoid freeze/thaw cycles.
Shipping	Ice bags
Buffer	Purified antibody in PBS with 0.05% sodium azide,0.05% protective protein and 50% glycerol.
Purification	Affinity Purification

Application

Dilution Ratio	WB 1:1000-1:2000,IHC 1:100-1:200,ICC/IF 1:50-1:200,ICC 1:50-1:200
Molecular Weight	152 kDa

Antigen Information

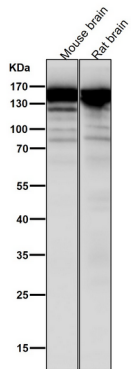
Gene Name	SOS1
Alternative Names	alternate SOS1; GF1; GGF1; GINGF; gingival fibromatosis; HGF; NS4; Sos1;;SOS 1
Gene ID	
SwissProt ID	Q07889
Immunogen	A synthesized peptide derived from human SOS 1

Background

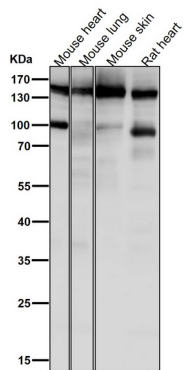
Promotes the exchange of Ras-bound GDP by GTP. Probably by promoting Ras activation, regulates phosphorylation of MAP kinase MAPK3 in response to EGF.

Research Area

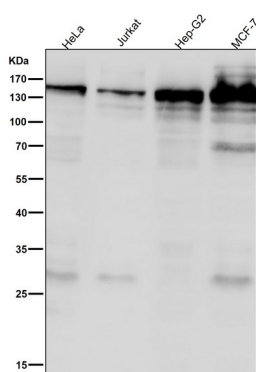
Image Data



All lanes use the Antibody at 1:2K dilution for 1 hour at room temperature.



All lanes use the Antibody at 1:2K dilution for 1 hour at room temperature.



All lanes use the Antibody at 1:2K dilution for 1 hour at room temperature.