

Product Name: CD26 Rabbit Monoclonal Antibody**Catalog #: AMRe83931**

For research use only.

Summary

Description	Recombinant rabbit monoclonal antibody
Host	Rabbit
Application	WB
Reactivity	Human,Mouse,Rat
Conjugation	Unconjugated
Modification	Unmodified
Isotype	IgG
Clonality	Monoclonal
Form	Liquid
Concentration	0.35mg/ml. The concentration of this product may be batch-dependent.
Storage	Aliquot and store at -20°C (valid for 12 months). Avoid freeze/thaw cycles.
Shipping	Ice bags
Buffer	Purified antibody in PBS with 0.05% sodium azide,0.05% protective protein and 50% glycerol.
Purification	Affinity Purification

Application

Dilution Ratio	WB 1:1000-1:2000
Molecular Weight	Calculated MW: 88 kDa ; Observed MW: 110 kDa

Antigen Information

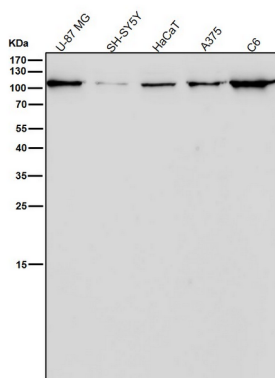
Gene Name	CD26 Dipeptidyl peptidase 4; ADABP; Adenosine deaminase complexing protein 2; ADCP-2;
Alternative Names	Dipeptidyl peptidase IV; DPP IV; T-cell activation antigen CD26; TP103; CD26; DPP4; ADCP2; DPP 4; DPP IV;;CD26
Gene ID	
SwissProt ID	P27487
Immunogen	A synthesized peptide derived from human CD26

Background

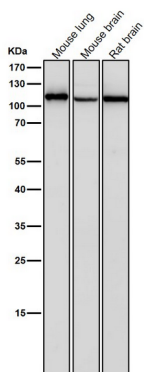
Interacts with multiple important cell surface ligands, such as adenosine deaminase, fibronectin, and IGF2 receptor to influence processes like T cell activation, cell migration and proliferation. Several DDP4 inhibitors have been developed and their effects have been tested in the field of diabetes, cardiovascular disease and tumor immunity.

Research Area

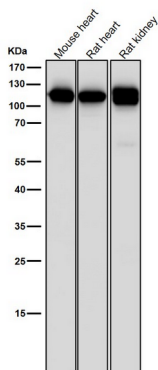
Image Data



All lanes use the Antibody at 1:2K dilution for 1 hour at room temperature.

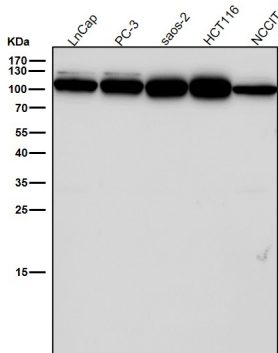


All lanes use the Antibody at 1:2K dilution for 1 hour at room temperature.

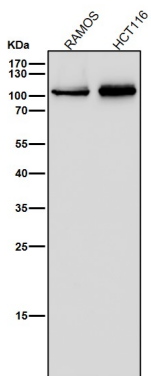


All lanes use the Antibody at 1:2K dilution for 1 hour at room temperature.

All lanes use the Antibody at 1:2K dilution for 1 hour at room temperature.



All lanes use the Antibody at 1:2K dilution for 1 hour at room temperature.



Western blot analysis of CD26 expression in HUVEC cell lysate.

