

**Product Name: FABP1 Rabbit Monoclonal Antibody****Catalog #: AMRe83914**

For research use only.

**Summary**

<b>Description</b>	Recombinant rabbit monoclonal antibody
<b>Host</b>	Rabbit
<b>Application</b>	WB,FC
<b>Reactivity</b>	Human,Mouse
<b>Conjugation</b>	Unconjugated
<b>Modification</b>	Unmodified
<b>Isotype</b>	IgG
<b>Clonality</b>	Monoclonal
<b>Form</b>	Liquid
<b>Concentration</b>	0.59mg/ml. The concentration of this product may be batch-dependent.
<b>Storage</b>	Aliquot and store at -20°C (valid for 12 months). Avoid freeze/thaw cycles.
<b>Shipping</b>	Ice bags
<b>Buffer</b>	Purified antibody in PBS with 0.05% sodium azide,0.05% protective protein and 50% glycerol.
<b>Purification</b>	Affinity Purification

**Application**

<b>Dilution Ratio</b>	WB 1:1000-1:2000,FC 1:20-1:100
<b>Molecular Weight</b>	14 kDa

**Antigen Information**

<b>Gene Name</b>	FABP1
<b>Alternative Names</b>	FABP1; FABPL; Fatty acid binding protein 1 liver; L FABP;;FABP1
<b>Gene ID</b>	
<b>SwissProt ID</b>	P07148
<b>Immunogen</b>	A synthesized peptide derived from human FABP1

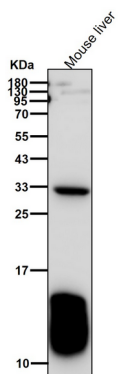
**Background**

Plays a role in lipoprotein-mediated cholesterol uptake in hepatocytes. Binds cholesterol. Binds free fatty acids and their coenzyme A derivatives, bilirubin, and some other small molecules in the cytoplasm. May be involved in intracellular lipid

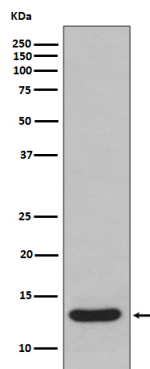
transport.

## Research Area

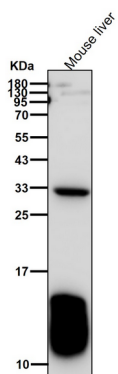
## Image Data



All lanes use the Antibody at 1:1K dilution for 1 hour at room temperature.



Western blot analysis of FABP1 expression in human fetal liver lysate.



All lanes use the Antibody at 1:2K dilution for 1 hour at room temperature.