

**Product Name: Myosin heavy chain Rabbit Monoclonal Antibody****Catalog #: AMRe83892**

For research use only.

**Summary**

<b>Description</b>	Recombinant rabbit monoclonal antibody
<b>Host</b>	Rabbit
<b>Application</b>	WB,IHC
<b>Reactivity</b>	Human,Mouse,Rat
<b>Conjugation</b>	Unconjugated
<b>Modification</b>	Unmodified
<b>Isotype</b>	IgG
<b>Clonality</b>	Monoclonal
<b>Form</b>	Liquid
<b>Concentration</b>	0.49mg/ml. The concentration of this product may be batch-dependent.
<b>Storage</b>	Aliquot and store at -20°C (valid for 12 months). Avoid freeze/thaw cycles.
<b>Shipping</b>	Ice bags
<b>Buffer</b>	Purified antibody in PBS with 0.05% sodium azide,0.05% protective protein and 50% glycerol.
<b>Purification</b>	Affinity Purification

**Application**

<b>Dilution Ratio</b>	WB 1:1000-1:2000,IHC 1:100-1:200
<b>Molecular Weight</b>	Calculated MW: 223,224 kDa ; Observed MW: 224 kDa

**Antigen Information**

<b>Gene Name</b>	Myosin heavy chain
<b>Alternative Names</b>	MYH6; MYH7; MYHC; MYHCA; MYHCB; Myosin heavy chain 6; Myosin heavy chain; Myosin-6;;Myosin heavy chain 6/7
<b>Gene ID</b>	
<b>SwissProt ID</b>	P12883/P13533
<b>Immunogen</b>	A synthesized peptide derived from human Myosin heavy chain 6

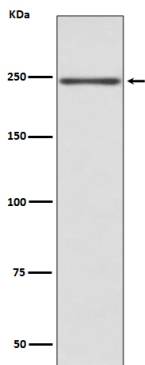
**Background**

Myosins are actin-based motor molecules with ATPase activity essential for muscle contraction. Forms regular bipolar thick

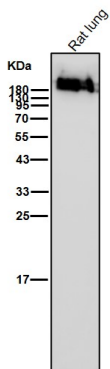
filaments that, together with actin thin filaments, constitute the fundamental contractile unit of skeletal and cardiac muscle.

## Research Area

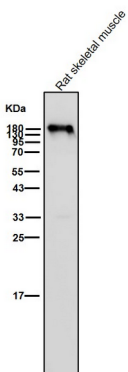
## Image Data



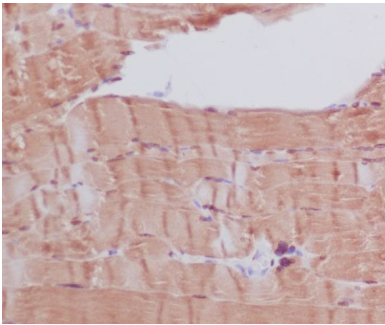
Western blot analysis of Myosin heavy chain expression in mouse heart lysate.



All lanes use the Antibody at 1:2K dilution for 1 hour at room temperature.



All lanes use the Antibody at 1:2K dilution for 1 hour at room temperature.



Immunohistochemical analysis of paraffin-embedded human skeletal muscle, using Myosin heavy chain Antibody.