

Product Name: PGC1alpha/beta Rabbit Monoclonal Antibody**Catalog #: AMRe83890**

For research use only.

Summary

| | |
|----------------------|---|
| Description | Recombinant rabbit monoclonal antibody |
| Host | Rabbit |
| Application | WB,ICC |
| Reactivity | Human,Mouse,Rat |
| Conjugation | Unconjugated |
| Modification | Unmodified |
| Isotype | IgG |
| Clonality | Monoclonal |
| Form | Liquid |
| Concentration | 0.49mg/ml. The concentration of this product may be batch-dependent. |
| Storage | Aliquot and store at -20°C (valid for 12 months). Avoid freeze/thaw cycles. |
| Shipping | Ice bags |
| Buffer | Purified antibody in PBS with 0.05% sodium azide,0.05% protective protein and 50% glycerol. |
| Purification | Affinity Purification |

Application

| | |
|-------------------------|--|
| Dilution Ratio | WB 1:1000-1:2000,ICC 1:50-1:200 |
| Molecular Weight | Calculated MW: 91,113 kDa ; Observed MW: 113 kDa |

Antigen Information

| | |
|--------------------------|---|
| Gene Name | PGC1alpha/beta |
| Alternative Names | PPARGC1A; LEM6; PGC1; PGC1A; PGC-1v; PPARGC1; PGC-1(alpha);;PGC1 alpha/beta |
| Gene ID | |
| SwissProt ID | Q9UBK2 |
| Immunogen | A synthesized peptide derived from human PGC1 alpha |

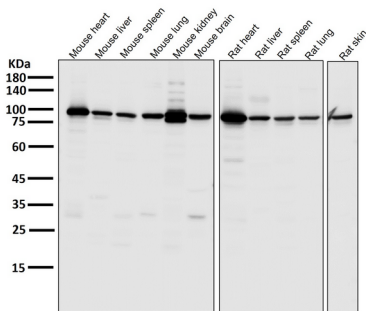
Background

Transcriptional coactivator for steroid receptors and nuclear receptors.Greatly increases the transcriptional activity of PPARG and thyroid hormone receptor on the uncoupling protein promoter.Can regulate key mitochondrial genes that contribute to

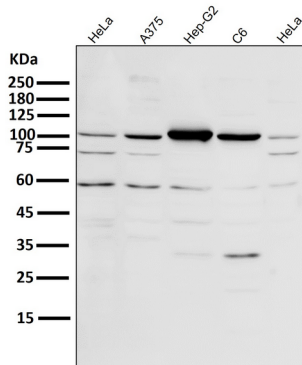
the program of adaptive thermogenesis.

Research Area

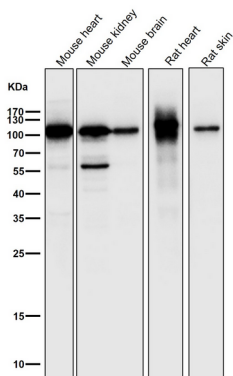
Image Data



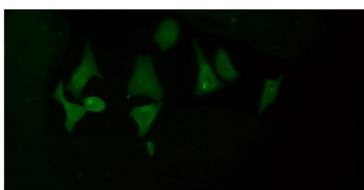
All lanes use the Antibody at 1:1000 dilution for 1 hour at room temperature.



All lanes use the Antibody at 1:1000 dilution for 1 hour at room temperature.



All lanes use the Antibody at 1:1000 dilution for 1 hour at room temperature.



Immunofluorescent analysis of HeLa cells using the Antibody at 1:150 dilution.