

**Product Name: HE4 Rabbit Monoclonal Antibody****Catalog #: AMRe83889**

For research use only.

**Summary**

<b>Description</b>	Recombinant rabbit monoclonal antibody
<b>Host</b>	Rabbit
<b>Application</b>	WB,ICC,FC,IP
<b>Reactivity</b>	Human,Mouse
<b>Conjugation</b>	Unconjugated
<b>Modification</b>	Unmodified
<b>Isotype</b>	IgG
<b>Clonality</b>	Monoclonal
<b>Form</b>	Liquid
<b>Concentration</b>	0.34mg/ml. The concentration of this product may be batch-dependent.
<b>Storage</b>	Aliquot and store at -20°C (valid for 12 months). Avoid freeze/thaw cycles.
<b>Shipping</b>	Ice bags
<b>Buffer</b>	Purified antibody in PBS with 0.05% sodium azide,0.05% protective protein and 50% glycerol.
<b>Purification</b>	Affinity Purification

**Application**

<b>Dilution Ratio</b>	WB 1:1000-1:2000,ICC 1:50-1:200,FC 1:20-1:100,IP 1:20-1:50
<b>Molecular Weight</b>	Calculated MW: 13 kDa ; Observed MW: 23 kDa

**Antigen Information**

<b>Gene Name</b>	HE4
<b>Alternative Names</b>	WFDC2; Epididymis-specific he4; Epididymal protein 4; DJ461P17.6; EDDM4; HE4; WAP5;;WFDC2
<b>Gene ID</b>	
<b>SwissProt ID</b>	Q14508
<b>Immunogen</b>	A synthesized peptide derived from human WFDC2

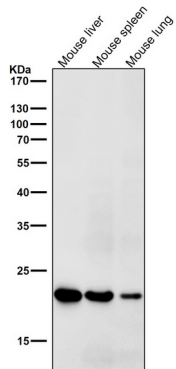
**Background**

Expressed in a number of normal tissues, including male reproductive system, regions of the respiratory tract and nasopharynx.

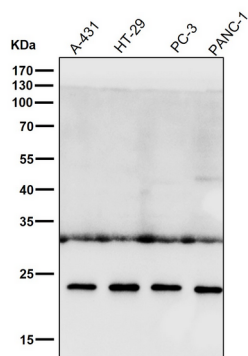
Highly expressed in a number of tumors cells lines, such ovarian, colon, breast, lung and renal cells lines. Initially described as being exclusively transcribed in the epididymis.

## Research Area

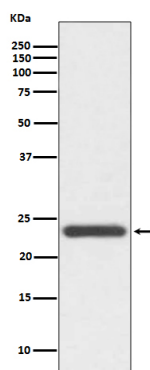
## Image Data



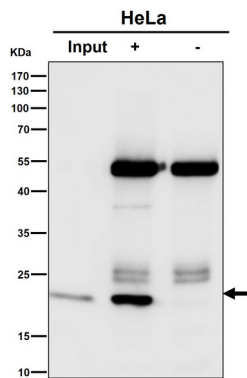
All lanes use the Antibody at 1:1K dilution for 1 hour at room temperature.



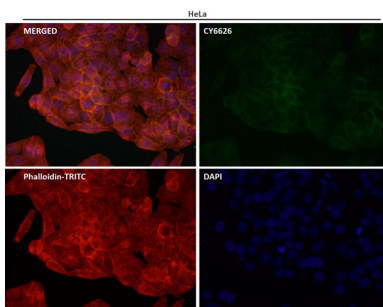
All lanes use the Antibody at 1:1K dilution for 1 hour at room temperature.



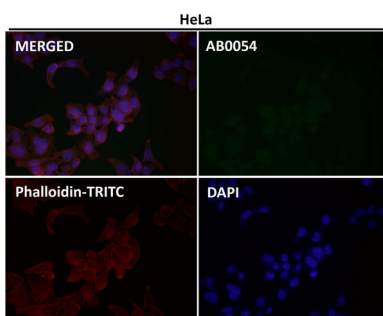
Western blot analysis of HE4 expression in SW480 cell lysate.



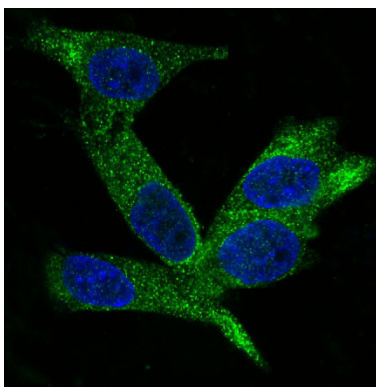
Immunoprecipitate (IP) analysis using the Antibody at 1:50 dilution. (wb at 1:6K dilution)



Immunofluorescent analysis using the Antibody at 1:50 dilution.



Immunofluorescent analysis using the Antibody at 1:150 dilution.



Immunofluorescent analysis of SK-OV-3 cells, using HE4 Antibody.