

**Product Name: Estrogen Receptor beta Rabbit  
Monoclonal Antibody  
Catalog #: AMRe83878**

---

## Summary

<b>Production Name</b>	Estrogen Receptor beta Rabbit Monoclonal Antibody
<b>Description</b>	Rabbit Monoclonal antibody
<b>Host</b>	Rabbit
<b>Application</b>	WB,IHC
<b>Reactivity</b>	Human

## Performance

<b>Conjugation</b>	Unconjugated
<b>Modification</b>	Unmodified
<b>Isotype</b>	IgG
<b>Clonality</b>	Monoclonal
<b>Form</b>	Liquid
<b>Storage</b>	Store at 4°C short term. Aliquot and store at -20°C long term. Avoid freeze/thaw cycles.
<b>Buffer</b>	Purified antibody in PBS with 0.05% sodium azide,0.05% protective protein and 50% glycerol.
<b>Purification</b>	Affinity Purification

## Immunogen

<b>Gene Name</b>	Estrogen Receptor beta
<b>Alternative Names</b>	ESR2; ESTRB; Estrogen receptor beta; NR3A2;;Estrogen receptor beta
<b>Gene ID</b>	
<b>SwissProt ID</b>	Q92731.A synthesized peptide derived from human Estrogen receptor beta

## Application

<b>Dilution Ratio</b>	WB:1:1000-1:2000,IHC:1:100-1:200
<b>Molecular Weight</b>	59 kDa

**Product Name: Estrogen Receptor beta Rabbit  
Monoclonal Antibody  
Catalog #: AMRe83878**

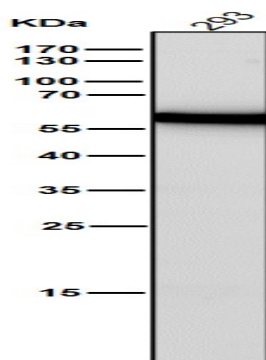


## Background

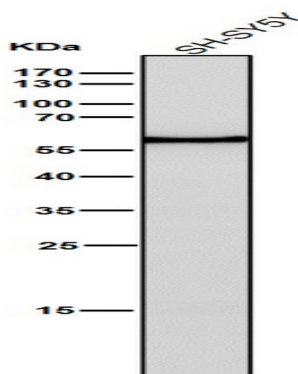
Nuclear hormone receptor. Binds estrogens with an affinity similar to that of ESR1/ER-alpha, and activates expression of reporter genes containing estrogen response elements (ERE) in an estrogen-dependent manner.

## Research Area

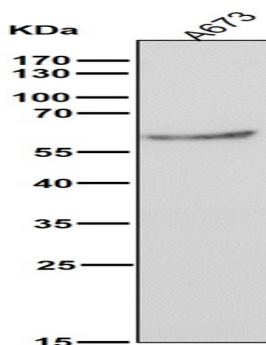
## Image Data



All lanes use the Antibody at 1:2K dilution for 1 hour at room temperature.



All lanes use the Antibody at 1:2K dilution for 1 hour at room temperature.

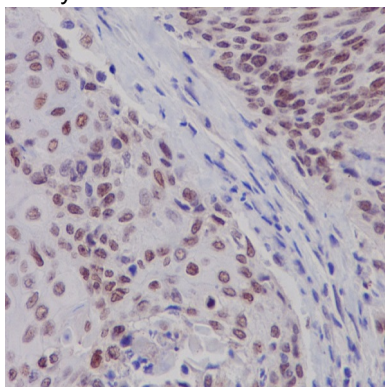


**Product Name: Estrogen Receptor beta Rabbit  
Monoclonal Antibody  
Catalog #: AMRe83878**

---



All lanes use the Antibody at 1:2K dilution for 1 hour at room temperature.



Immunohistochemical analysis of paraffin-embedded human cervix cancer, using Estrogen Receptor beta Antibody.

### **Note**

For research use only.