

**Product Name: PAX7 Rabbit Monoclonal Antibody****Catalog #: AMRe83854**

For research use only.

**Summary**

<b>Description</b>	Recombinant rabbit monoclonal antibody
<b>Host</b>	Rabbit
<b>Application</b>	WB,FC
<b>Reactivity</b>	Human,Mouse,Rat
<b>Conjugation</b>	Unconjugated
<b>Modification</b>	Unmodified
<b>Isotype</b>	IgG
<b>Clonality</b>	Monoclonal
<b>Form</b>	Liquid
<b>Concentration</b>	0.55mg/ml. The concentration of this product may be batch-dependent.
<b>Storage</b>	Aliquot and store at -20°C (valid for 12 months). Avoid freeze/thaw cycles.
<b>Shipping</b>	Ice bags
<b>Buffer</b>	Purified antibody in PBS with 0.05% sodium azide,0.05% protective protein and 50% glycerol.
<b>Purification</b>	Affinity Purification

**Application**

<b>Dilution Ratio</b>	WB 1:1000-1:2000,FC 1:20-1:100
<b>Molecular Weight</b>	Calculated MW: 55 kDa ; Observed MW: 57 kDa

**Antigen Information**

<b>Gene Name</b>	PAX7
<b>Alternative Names</b>	Paired box protein Pax-7; HuP1; PAX7; HUP1;;PAX7
<b>Gene ID</b>	
<b>SwissProt ID</b>	P23759
<b>Immunogen</b>	A synthesized peptide derived from human PAX7

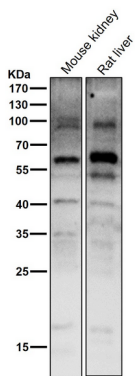
**Background**

This gene is a member of the paired box (PAX) family of transcription factors. Members of this gene family typically contain a paired box domain, an octapeptide, and a paired-type homeodomain. Probable transcription factor. May have a role in

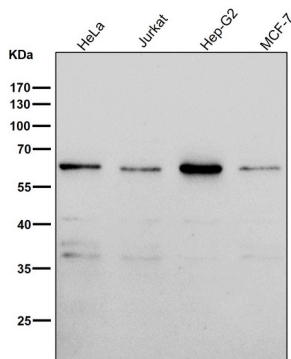
myogenesis.

## Research Area

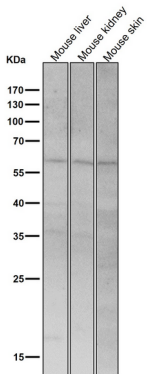
## Image Data



All lanes use the Antibody at 1:1K dilution for 1 hour at room temperature.



All lanes use the Antibody at 1:2K dilution for 1 hour at room temperature.



All lanes use the Antibody at 1:2K dilution for 1 hour at room temperature.