
Product Name: 14-3-3 gamma Rabbit Monoclonal Antibody**Catalog #: AMRe83841**

For research use only.

Summary

Description	Recombinant rabbit monoclonal antibody
Host	Rabbit
Application	WB,FC
Reactivity	Human,Mouse,Rat
Conjugation	Unconjugated
Modification	Unmodified
Isotype	IgG
Clonality	Monoclonal
Form	Liquid
Concentration	0.55mg/ml. The concentration of this product may be batch-dependent.
Storage	Aliquot and store at -20°C (valid for 12 months). Avoid freeze/thaw cycles.
Shipping	Ice bags
Buffer	Purified antibody in PBS with 0.05% sodium azide,0.05% protective protein and 50% glycerol.
Purification	Affinity Purification

Application

Dilution Ratio	WB 1:1000-1:2000,FC 1:20-1:100
Molecular Weight	28 kDa

Antigen Information

Gene Name	14-3-3 gamma
Alternative Names	1433G, 143G, KCIP-1, Protein kinase C inhibitor protein-1, YWHAG; gamma polypeptide;;14-3-3 gamma
Gene ID	
SwissProt ID	P61981
Immunogen	A synthesized peptide derived from human 14-3-3 gamma

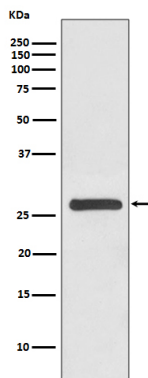
Background

Induce target protein conformational changes that modify target protein function. Distinct temporal and spatial expression

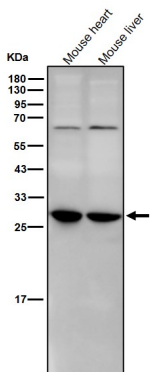
patterns of 14-3-3 isoforms have been observed in development and in acute response to extracellular signals and drugs, suggesting that 14-3-3 isoforms may perform different functions despite their sequence similarities.

Research Area

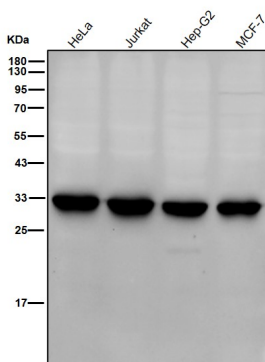
Image Data



Western blot analysis of 14-3-3 gamma expression in HeLa cell lysate.



All lanes use the Antibody at 1:2K dilution for 1 hour at room temperature.



All lanes use the Antibody at 1:2K dilution for 1 hour at room temperature.