

**Product Name: Cdk8 Rabbit Monoclonal Antibody****Catalog #: AMRe83837**

For research use only.

**Summary**

<b>Description</b>	Recombinant rabbit monoclonal antibody
<b>Host</b>	Rabbit
<b>Application</b>	WB,IP
<b>Reactivity</b>	Human,Mouse,Rat
<b>Conjugation</b>	Unconjugated
<b>Modification</b>	Unmodified
<b>Isotype</b>	IgG
<b>Clonality</b>	Monoclonal
<b>Form</b>	Liquid
<b>Concentration</b>	0.35mg/ml. The concentration of this product may be batch-dependent.
<b>Storage</b>	Aliquot and store at -20°C (valid for 12 months). Avoid freeze/thaw cycles.
<b>Shipping</b>	Ice bags
<b>Buffer</b>	Purified antibody in PBS with 0.05% sodium azide,0.05% protective protein and 50% glycerol.
<b>Purification</b>	Affinity Purification

**Application**

<b>Dilution Ratio</b>	WB 1:1000-1:2000,IP 1:20-1:50
<b>Molecular Weight</b>	53 kDa

**Antigen Information**

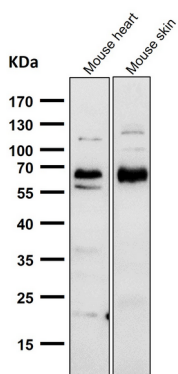
<b>Gene Name</b>	Cdk8 CDK8 protein kinase; Cell division protein kinase 8; Cyclin Dependent kinase 8; K35; Mediator
<b>Alternative Names</b>	complex subunit cdk8; Mediator of RNA polymerase II transcription subunit cdk8; Protein kinase K35;;CDK8
<b>Gene ID</b>	
<b>SwissProt ID</b>	P49336
<b>Immunogen</b>	A synthesized peptide derived from human CDK8

**Background**

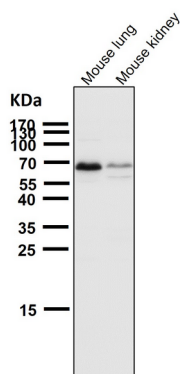
Component of the Mediator complex, a coactivator involved in regulated gene transcription of nearly all RNA polymerase II-dependent genes. Mediator functions as a bridge to convey information from gene-specific regulatory proteins to the basal RNA polymerase II transcription machinery.

## Research Area

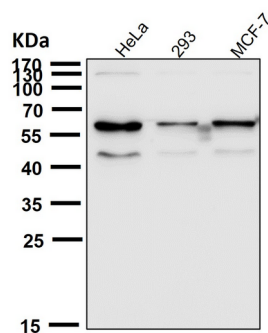
## Image Data



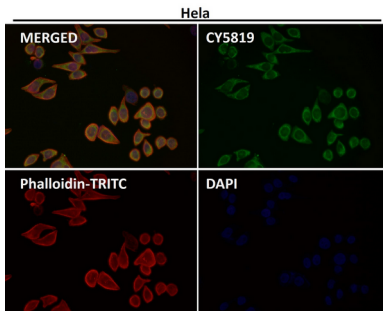
All lanes use the Antibody at 1:1K dilution for 1 hour at room temperature.



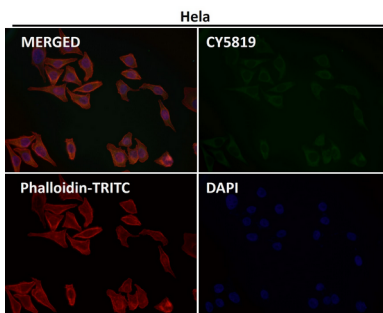
All lanes use the Antibody at 1:1K dilution for 1 hour at room temperature.



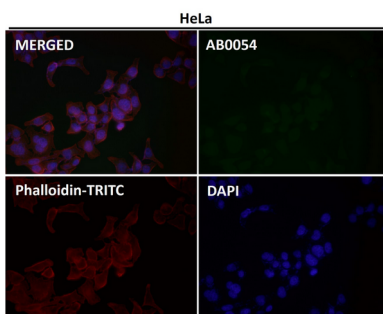
All lanes use the Antibody at 1:2K dilution for 1 hour at room temperature.



Immunofluorescent analysis using the Antibody at 1:50 dilution.



Immunofluorescent analysis using the Antibody at 1:500 dilution.



Immunofluorescent analysis using the Antibody at 1:150 dilution.