

Product Name: Hsp70 Rabbit Monoclonal Antibody**Catalog #: AMRe83821**

For research use only.

Summary

| | |
|----------------------|---|
| Description | Recombinant rabbit monoclonal antibody |
| Host | Rabbit |
| Application | WB,IHC,ICC/IF,ICC,FC,IP |
| Reactivity | Human |
| Conjugation | Unconjugated |
| Modification | Unmodified |
| Isotype | IgG |
| Clonality | Monoclonal |
| Form | Liquid |
| Concentration | 0.55mg/ml. The concentration of this product may be batch-dependent. |
| Storage | Aliquot and store at -20°C (valid for 12 months). Avoid freeze/thaw cycles. |
| Shipping | Ice bags |
| Buffer | Purified antibody in PBS with 0.05% sodium azide,0.05% protective protein and 50% glycerol. |
| Purification | Affinity Purification |

Application

| | |
|-------------------------|--|
| Dilution Ratio | WB 1:1000-1:2000,IHC 1:100-1:200,ICC/IF 1:50-1:200,ICC 1:50-1:200,FC 1:20-1:100,IP 1:20-1:50 |
| Molecular Weight | 70 kDa |

Antigen Information

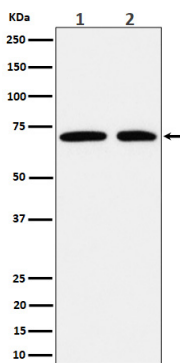
| | |
|--------------------------|---|
| Gene Name | Hsp70 |
| Alternative Names | Heat shock 70 kDa protein 1; Heat shock 70 kDa protein 1/2; Heat shock 70 kDa protein 1A; Heat shock 70 kDa protein 1A/1B; Heat shock 70kDa protein 1B; Heat shock induced protein; HEL S 103; HSP70 1; HSP70 1A; HSP70 1B; HSP70 2; HSP70-1; HSP70-1/HSP70-2; HSP70-1A; HSP70-2; HSP70.1; HSP70.1/HSP70.2; HSP72; HSPA1; HSPA1A; HSPA1B;;Hsp70 |
| Gene ID | |
| SwissProt ID | P0DMV8/P0DMV9 |
| Immunogen | A synthesized peptide derived from human Hsp70 |

Background

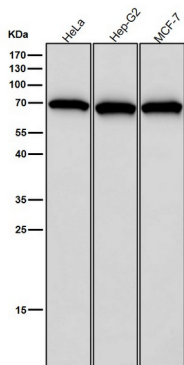
Molecular chaperone implicated in a wide variety of cellular processes, including protection of the proteome from stress, folding and transport of newly synthesized polypeptides, activation of proteolysis of misfolded proteins and the formation and dissociation of protein complexes.

Research Area

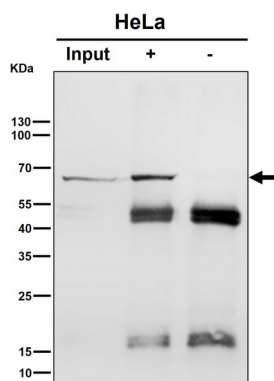
Image Data



Western blot analysis of Hsp70 expression in (1) HeLa cell lysate; (2) MCF7 cell lysate.



All lanes use the Antibody at 1:2K dilution for 1 hour at room temperature.



Immunoprecipitate (IP) analysis using the Antibody at 1:50 dilution. (wb at 1:1K dilution)