

**Product Name: PKC Rabbit Monoclonal Antibody****Catalog #: AMRe83820**

For research use only.

**Summary**

<b>Description</b>	Recombinant rabbit monoclonal antibody
<b>Host</b>	Rabbit
<b>Application</b>	WB,ICC,FC,IP
<b>Reactivity</b>	Human,Mouse,Rat
<b>Conjugation</b>	Unconjugated
<b>Modification</b>	Unmodified
<b>Isotype</b>	IgG
<b>Clonality</b>	Monoclonal
<b>Form</b>	Liquid
<b>Concentration</b>	0.49mg/ml. The concentration of this product may be batch-dependent.
<b>Storage</b>	Aliquot and store at -20°C (valid for 12 months). Avoid freeze/thaw cycles.
<b>Shipping</b>	Ice bags
<b>Buffer</b>	Purified antibody in PBS with 0.05% sodium azide,0.05% protective protein and 50% glycerol.
<b>Purification</b>	Affinity Purification

**Application**

<b>Dilution Ratio</b>	WB 1:1000-1:2000,ICC 1:50-1:200,FC 1:20-1:100,IP 1:20-1:50
<b>Molecular Weight</b>	Calculated MW: 37,40,68-84 kDa ; Observed MW: 77 kDa

**Antigen Information**

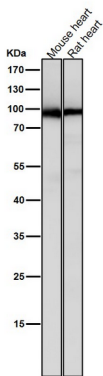
<b>Gene Name</b>	PKC PKC alpha; PKC beta; PKC delta; PKC epsilon; PKC gamma; PKC zeta; PKC-A; PKC-alpha; PKC2; PKCA; PKCB; PKCD; PKCE; PKCG; PRKCA; PRKCB; PRKCB1; PRKCB2; PRKCD; PRKCE; PRKCG;
<b>Alternative Names</b>	PRKCZ; Protein kinase C alpha; Protein kinase C alpha type; Protein kinase C; Protein kinase C beta; Protein kinase C delta; Protein kinase C epsilon; Protein kinase C gamma; Protein kinase C zeta;;PKC
<b>Gene ID</b>	
<b>SwissProt ID</b>	P05129/P05771/P17252/Q02156/Q05513/Q05655
<b>Immunogen</b>	A synthesized peptide derived from human PKC

## Background

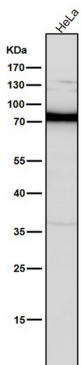
Calcium-activated, phospholipid- and diacylglycerol (DAG)-dependent serine/threonine-protein kinase that plays diverse roles in neuronal cells and eye tissues, such as regulation of the neuronal receptors GRIA4/GLUR4 and GRIN1/NMDAR1, modulation of receptors and neuronal functions related to sensitivity to opiates, pain and alcohol, mediation of synaptic function and cell survival after ischemia, and inhibition of gap junction activity after oxidative stress.

## Research Area

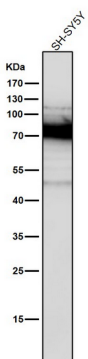
## Image Data



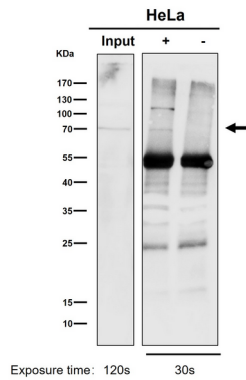
All lanes use the Antibody at 1:2K dilution for 1 hour at room temperature.



All lanes use the Antibody at 1:2K dilution for 1 hour at room temperature.



All lanes use the Antibody at 1:2K dilution for 1 hour at room temperature.



Immunoprecipitate (IP) analysis using the Antibody at 1:50 dilution. (wb at 1:1K dilution)