

Product Name: PRP19 Rabbit Monoclonal Antibody**Catalog #: AMRe83810**

For research use only.

Summary

Description	Recombinant rabbit monoclonal antibody
Host	Rabbit
Application	WB,IHC,ICC/IF,ICC,FC
Reactivity	Human,Mouse,Rat
Conjugation	Unconjugated
Modification	Unmodified
Isotype	IgG
Clonality	Monoclonal
Form	Liquid
Concentration	0.55mg/ml. The concentration of this product may be batch-dependent.
Storage	Aliquot and store at -20°C (valid for 12 months). Avoid freeze/thaw cycles.
Shipping	Ice bags
Buffer	Purified antibody in PBS with 0.05% sodium azide,0.05% protective protein and 50% glycerol.
Purification	Affinity Purification

Application

Dilution Ratio	WB 1:1000-1:2000,IHC 1:100-1:200,ICC/IF 1:50-1:200,ICC 1:50-1:200,FC 1:20-1:100
Molecular Weight	55 kDa

Antigen Information

Gene Name	PRP19
Alternative Names	NMP200; nuclear matrix protein 200; pre-mRNA-processing factor 19; PRP19; PRP19/PSO4; PRPF19; PSO4; senescence evasion factor; SNEV; UBOX4;;PRPF19
Gene ID	
SwissProt ID	Q9UMS4
Immunogen	A synthesized peptide derived from human PRPF19

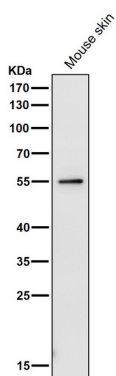
Background

Core component of the PRP19C/Prp19 complex/NTC/Nineteen complex which is part of the spliceosome and participates in its

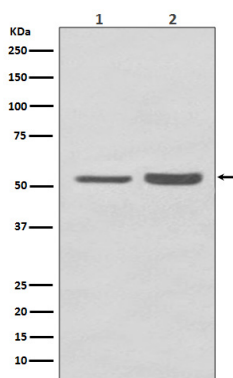
assembly, its remodeling and is required for its activity. During assembly of the spliceosome, mediates 'Lys-63'-linked polyubiquitination of the U4 spliceosomal protein PRPF3. Ubiquitination of PRPF3 allows its recognition by the U5 component PRPF8 and stabilizes the U4/U5/U6 tri-snRNP spliceosomal complex

Research Area

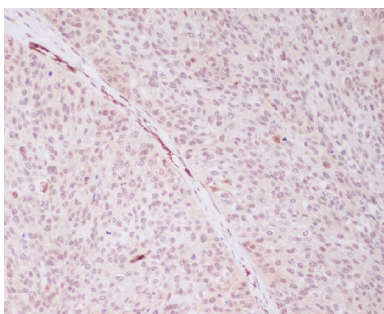
Image Data



All lanes use the Antibody at 1:2K dilution for 1 hour at room temperature.



Western blot analysis of PRP19 expression in (1) HepG2 cell lysate; (2) NIH/3T3 cell lysate.



Immunohistochemical analysis of paraffin-embedded human cervix cancer, using PRP19 Antibody.