

**Product Name: Hes1 Rabbit Monoclonal Antibody****Catalog #: AMRe83801**

For research use only.

**Summary**

<b>Description</b>	Recombinant rabbit monoclonal antibody
<b>Host</b>	Rabbit
<b>Application</b>	WB,IHC,ICC/IF,ICC,FC
<b>Reactivity</b>	Human,Mouse,Rat
<b>Conjugation</b>	Unconjugated
<b>Modification</b>	Unmodified
<b>Isotype</b>	IgG
<b>Clonality</b>	Monoclonal
<b>Form</b>	Liquid
<b>Concentration</b>	0.39mg/ml. The concentration of this product may be batch-dependent.
<b>Storage</b>	Aliquot and store at -20°C (valid for 12 months). Avoid freeze/thaw cycles.
<b>Shipping</b>	Ice bags
<b>Buffer</b>	Purified antibody in PBS with 0.05% sodium azide,0.05% protective protein and 50% glycerol.
<b>Purification</b>	Affinity Purification

**Application**

<b>Dilution Ratio</b>	WB 1:1000-1:2000,IHC 1:100-1:200,ICC/IF 1:50-1:200,ICC 1:50-1:200,FC 1:20-1:100
<b>Molecular Weight</b>	30 kDa

**Antigen Information**

<b>Gene Name</b>	Hes1
<b>Alternative Names</b>	HES1; BHLHb39; HHL; HL; Hairy and enhancer of split 1; Hairy homolog; HRY; Hairy homolog (Drosophila); Transcription factor HES-1; Hairy-like protein; HES-1;;HES1
<b>Gene ID</b>	
<b>SwissProt ID</b>	Q14469
<b>Immunogen</b>	A synthesized peptide derived from human HES1

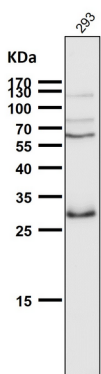
**Background**

HES1 is one of seven members of the HES family of basic helix-loop-helix (bHLH) transcription factors which function primarily

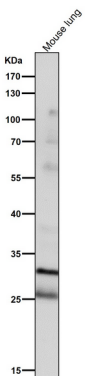
to repress transcription of bHLH-dependent genes. HES1 is understood to play an important conserved role in maintaining pluripotency of embryonic and adult stem/progenitor cells via the transcriptional repression of genes that promote differentiation.

## Research Area

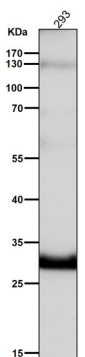
## Image Data



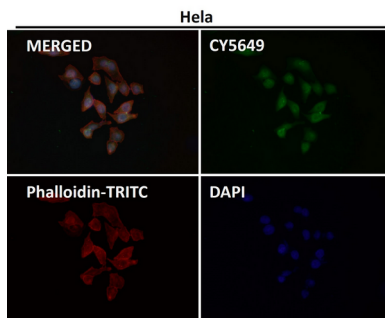
All lanes use the Antibody at 1:1K dilution for 1 hour at room temperature.



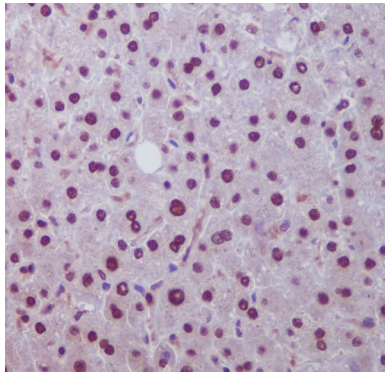
All lanes use the Antibody at 1:2K dilution for 1 hour at room temperature.



All lanes use the Antibody at 1:2K dilution for 1 hour at room temperature.



Immunofluorescent analysis using the Antibody at 1:50 dilution.



Immunohistochemical analysis of paraffin-embedded human liver, using Hes1 Antibody.