

Product Name: BCL2A1 Rabbit Monoclonal Antibody**Catalog #: AMRe83797**

For research use only.

Summary

Description	Recombinant rabbit monoclonal antibody
Host	Rabbit
Application	WB,IHC,ICC/IF,ICC,FC
Reactivity	Human,Mouse,Rat
Conjugation	Unconjugated
Modification	Unmodified
Isotype	IgG
Clonality	Monoclonal
Form	Liquid
Concentration	0.49mg/ml. The concentration of this product may be batch-dependent.
Storage	Aliquot and store at -20°C (valid for 12 months). Avoid freeze/thaw cycles.
Shipping	Ice bags
Buffer	Purified antibody in PBS with 0.05% sodium azide,0.05% protective protein and 50% glycerol.
Purification	Affinity Purification

Application

Dilution Ratio	WB 1:1000-1:2000,IHC 1:100-1:200,ICC/IF 1:50-1:200,ICC 1:50-1:200,FC 1:20-1:100
Molecular Weight	Calculated MW: 20 kDa ; Observed MW: 27 kDa

Antigen Information

Gene Name	BCL2A1
Alternative Names	BCL2A1; ACC-1; ACC-2; Bcl-2-like protein 5; Bcl-2-related protein A1; BCL2-related protein A1; BFL1; Bcl2-L-5; BCL2L5; GRS; HBPA1; Protein BFL-1; Protein GRS;;Bcl 2 A1
Gene ID	
SwissProt ID	Q16548
Immunogen	A synthesized peptide derived from human Bcl 2 A1

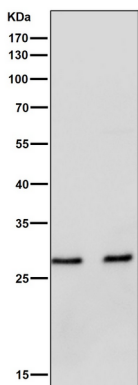
Background

Retards apoptosis induced by IL-3 deprivation. May function in the response of hemopoietic cells to external signals and in

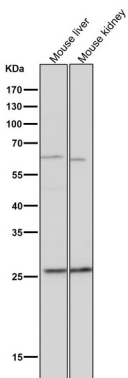
maintaining endothelial survival during infection (By similarity).Can inhibit apoptosis induced by serum starvation in the mammary epithelial cell line HC11 (By similarity).

Research Area

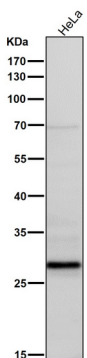
Image Data



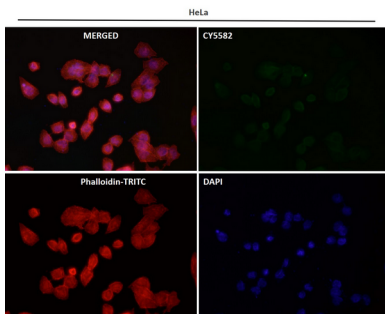
All lanes use the Antibody at 1:1K dilution for 1 hour at room temperature.



All lanes use the Antibody at 1:1K dilution for 1 hour at room temperature.



All lanes use the Antibody at 1:1K dilution for 1 hour at room temperature.



Immunofluorescent analysis using the Antibody at 1:50 dilution.