

**Product Name: HIF-1beta Rabbit Monoclonal Antibody****Catalog #: AMRe83787**

For research use only.

**Summary**

<b>Description</b>	Recombinant rabbit monoclonal antibody
<b>Host</b>	Rabbit
<b>Application</b>	WB,IHC
<b>Reactivity</b>	Human
<b>Conjugation</b>	Unconjugated
<b>Modification</b>	Unmodified
<b>Isotype</b>	IgG
<b>Clonality</b>	Monoclonal
<b>Form</b>	Liquid
<b>Concentration</b>	0.49mg/ml. The concentration of this product may be batch-dependent.
<b>Storage</b>	Aliquot and store at -20°C (valid for 12 months). Avoid freeze/thaw cycles.
<b>Shipping</b>	Ice bags
<b>Buffer</b>	Purified antibody in PBS with 0.05% sodium azide,0.05% protective protein and 50% glycerol.
<b>Purification</b>	Affinity Purification

**Application**

<b>Dilution Ratio</b>	WB 1:1000-1:2000,IHC 1:100-1:200
<b>Molecular Weight</b>	87 kDa

**Antigen Information**

<b>Gene Name</b>	HIF-1beta
<b>Alternative Names</b>	ARNT;HIF-1beta;HIF1B;HIF1BETA;TANGO;bHLHe2;;HIF 1 beta
<b>Gene ID</b>	
<b>SwissProt ID</b>	P27540
<b>Immunogen</b>	A synthesized peptide derived from human HIF 1 beta

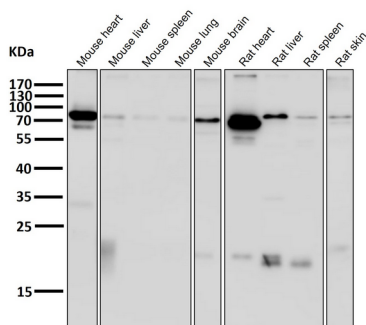
**Background**

Required for activity of the AHR. Upon ligand binding, AHR translocates into the nucleus, where it heterodimerizes with ARNT and induces transcription by binding to xenobiotic response elements (XRE). Not required for the ligand-binding subunit to

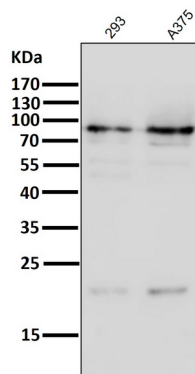
translocate from the cytosol to the nucleus after ligand binding.

## Research Area

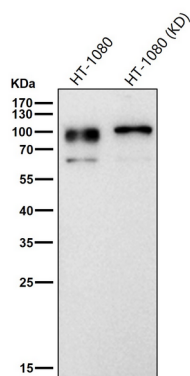
## Image Data



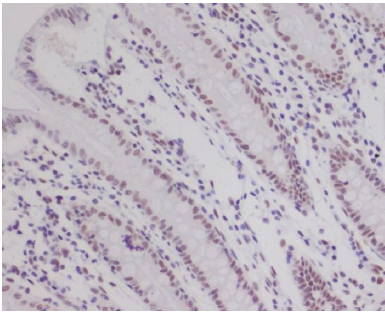
All lanes use the Antibody at 1:1K dilution for 1 hour at room temperature.



All lanes use the Antibody at 1:1K dilution for 1 hour at room temperature.



All lanes use the Antibody at 1:1K dilution for 1 hour at room temperature.



Immunohistochemical analysis of paraffin-embedded human colon, using HIF-1 beta Antibody .