

**Product Name: PI3 Kinase p55 gamma Rabbit
Monoclonal Antibody
Catalog #: AMRe83778**

Summary

Production Name	PI3 Kinase p55 gamma Rabbit Monoclonal Antibody
Description	Rabbit Monoclonal antibody
Host	Rabbit
Application	WB,IHC,ICC,IF
Reactivity	Human,Mouse,Rat

Performance

Conjugation	Unconjugated
Modification	Unmodified
Isotype	IgG
Clonality	Monoclonal
Form	Liquid
Storage	Store at 4°C short term. Aliquot and store at -20°C long term. Avoid freeze/thaw cycles.
Buffer	Purified antibody in PBS with 0.05% sodium azide,0.05% protective protein and 50% glycerol.
Purification	Affinity Purification

Immunogen

Gene Name	PI3 Kinase p55 gamma
Alternative Names	GRB1, P85A, PI3-kinase p85-alpha subunit, PI3K, PI3K p85-alpha; P55G, PI3-kinase p85-gamma subunit, PI3K p85-gamma,;PI3 kinase p55 gamma
Gene ID	
SwissProt ID	Q92569.A synthesized peptide derived from human PI3 kinase p55 gamma

Application

Dilution Ratio	WB:1:1000-1:2000,IHC:1:100-1:200;IF:1:50-1:200,ICC:1:50-1:200
Molecular Weight	54 kDa

**Product Name: PI3 Kinase p55 gamma Rabbit
Monoclonal Antibody
Catalog #: AMRe83778**

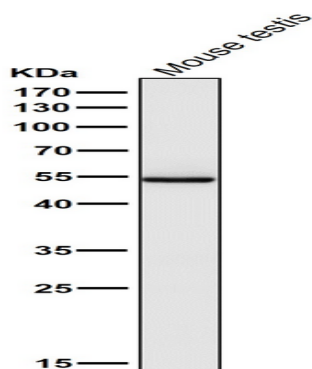


Background

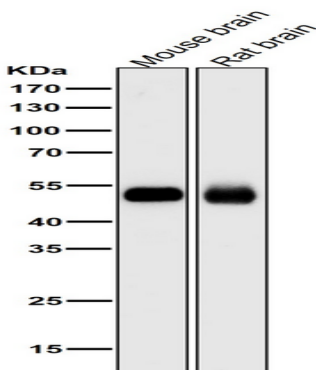
Binds to activated (phosphorylated) protein-tyrosine kinases through its SH2 domain and regulates their kinase activity.
During insulin stimulation, it also binds to IRS-1.

Research Area

Image Data

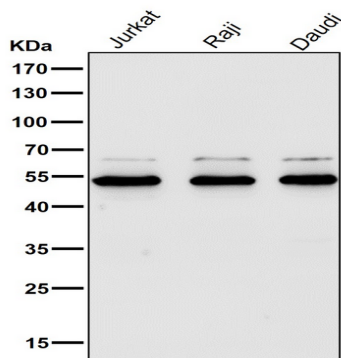


All lanes use the Antibody at 1:2K dilution for 1 hour at room temperature.

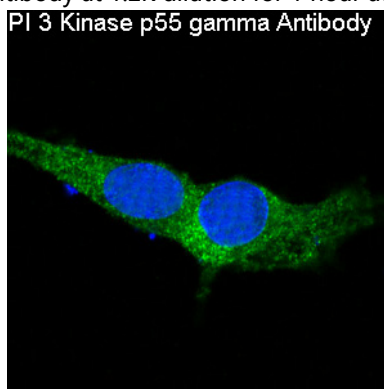


All lanes use the Antibody at 1:2K dilution for 1 hour at room temperature.

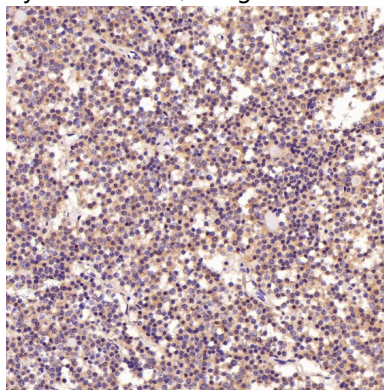
**Product Name: PI3 Kinase p55 gamma Rabbit
Monoclonal Antibody
Catalog #: AMRe83778**



All lanes use the Antibody at 1:2K dilution for 1 hour at room temperature.

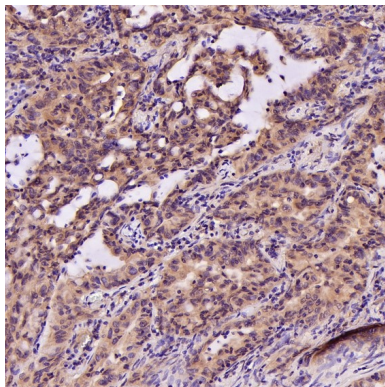


Immunofluorescent analysis of C6 cells, using PI 3 Kinase p55 gamma Antibody .

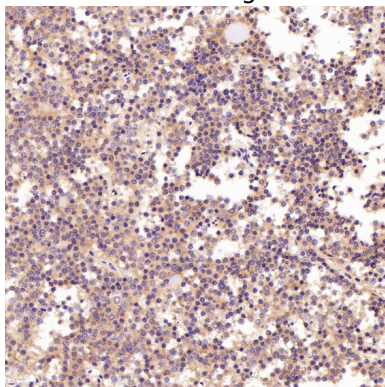


Immunohistochemical analysis of paraffin-embedded Human pituitary tumor, using the Antibody at 1:200 dilution.

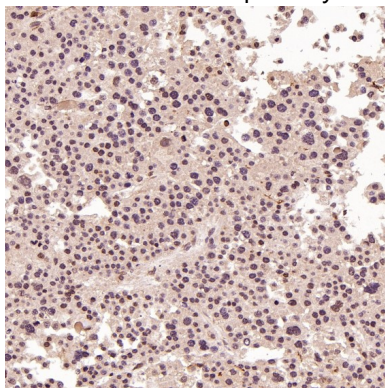
**Product Name: PI3 Kinase p55 gamma Rabbit
Monoclonal Antibody
Catalog #: AMRe83778**



Immunohistochemical analysis of paraffin-embedded Human lung adenocarcinoma, using the Antibody at 1:200 dilution.

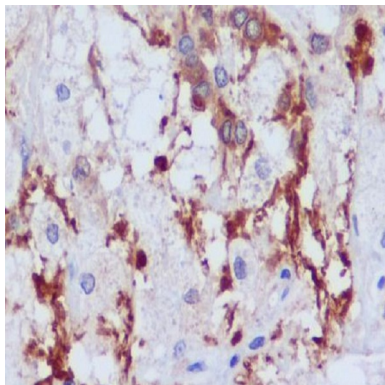


Immunohistochemical analysis of paraffin-embedded Human pituitary tumor, using the Antibody at 1:200 dilution.



Immunohistochemical analysis of paraffin-embedded Human liver cancer, using the Antibody at 1:100 dilution.

**Product Name: PI3 Kinase p55 gamma Rabbit
Monoclonal Antibody
Catalog #: AMRe83778**



Immunohistochemical analysis of paraffin-embedded human astrocytoma, using PI 3 Kinase p55 gamma Antibody.

Note

For research use only.