

**Product Name: Hsp70 Rabbit Monoclonal Antibody****Catalog #: AMRe83775**

For research use only.

**Summary**

<b>Description</b>	Recombinant rabbit monoclonal antibody
<b>Host</b>	Rabbit
<b>Application</b>	WB,IHC,ICC/IF,ICC,FC
<b>Reactivity</b>	Human,Mouse,Rat
<b>Conjugation</b>	Unconjugated
<b>Modification</b>	Unmodified
<b>Isotype</b>	IgG
<b>Clonality</b>	Monoclonal
<b>Form</b>	Liquid
<b>Concentration</b>	0.34mg/ml. The concentration of this product may be batch-dependent.
<b>Storage</b>	Aliquot and store at -20°C (valid for 12 months). Avoid freeze/thaw cycles.
<b>Shipping</b>	Ice bags
<b>Buffer</b>	Purified antibody in PBS with 0.05% sodium azide,0.05% protective protein and 50% glycerol.
<b>Purification</b>	Affinity Purification

**Application**

<b>Dilution Ratio</b>	WB 1:1000-1:2000,IHC 1:100-1:200,ICC/IF 1:50-1:200,ICC 1:50-1:200,FC 1:20-1:100
<b>Molecular Weight</b>	70 kDa

**Antigen Information**

<b>Gene Name</b>	Hsp70
<b>Alternative Names</b>	HSPA1; HSP70-1; HSP70-2; HSPA1A; HS71A; HS71B; HSPA1A ; HSPA1B;;Hsp70
<b>Gene ID</b>	
<b>SwissProt ID</b>	P0DMV8
<b>Immunogen</b>	A synthesized peptide derived from human Hsp70

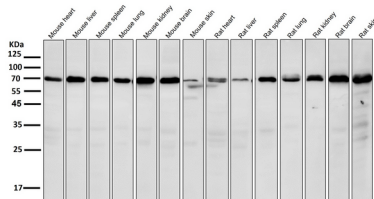
**Background**

Molecular chaperone implicated in a wide variety of cellular processes, including protection of the proteome from stress, folding and transport of newly synthesized polypeptides, activation of proteolysis of misfolded proteins and the formation and

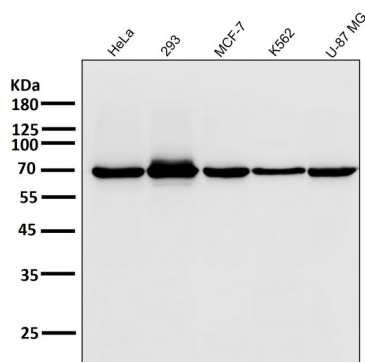
dissociation of protein complexes.

## Research Area

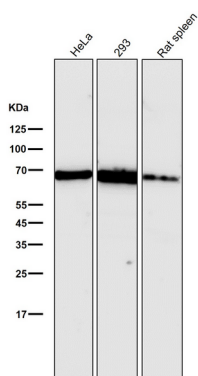
## Image Data



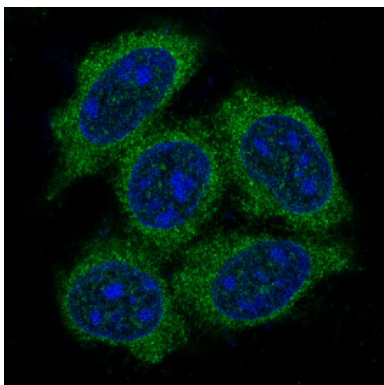
All lanes use the Antibody at 1:2K dilution for 1 hour at room temperature.



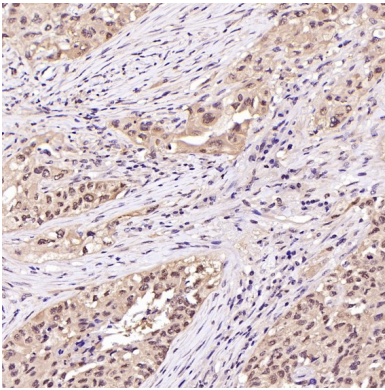
All lanes use the Antibody at 1:2K dilution for 1 hour at room temperature.



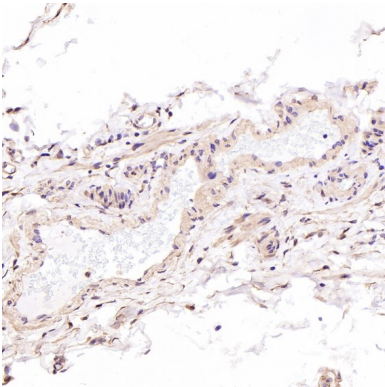
All lanes use the Antibody at 1:2K dilution for 1 hour at room temperature.



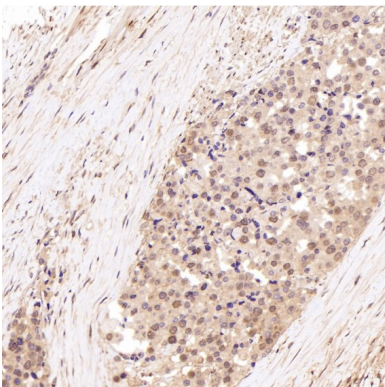
Immunofluorescent analysis of HeLa cells, using Hsp70 Antibody .



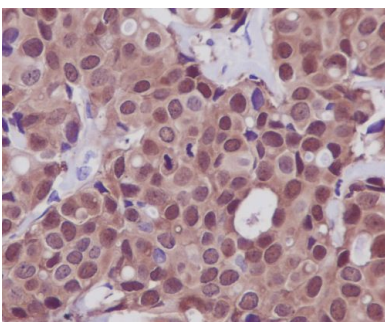
Immunohistochemical analysis of paraffin-embedded Human squamous carcinoma, using the Antibody at 1:200 dilution.



Immunohistochemical analysis of paraffin-embedded Human testis cancer, using the Antibody at 1:200 dilution.



Immunohistochemical analysis of paraffin-embedded Human prostate cancer, using the Antibody at 1:200 dilution.



Immunohistochemical analysis of paraffin-embedded human breast, using Hsp70 Antibody .