

---

**Product Name: Survivin Rabbit Monoclonal Antibody****Catalog #: AMRe83774**

For research use only.

**Summary**

<b>Description</b>	Recombinant rabbit monoclonal antibody
<b>Host</b>	Rabbit
<b>Application</b>	WB,IHC,IP
<b>Reactivity</b>	Mouse,Rat
<b>Conjugation</b>	Unconjugated
<b>Modification</b>	Unmodified
<b>Isotype</b>	IgG
<b>Clonality</b>	Monoclonal
<b>Form</b>	Liquid
<b>Concentration</b>	0.55mg/ml. The concentration of this product may be batch-dependent.
<b>Storage</b>	Aliquot and store at -20°C (valid for 12 months). Avoid freeze/thaw cycles.
<b>Shipping</b>	Ice bags
<b>Buffer</b>	Purified antibody in PBS with 0.05% sodium azide,0.05% protective protein and 50% glycerol.
<b>Purification</b>	Affinity Purification

**Application**

<b>Dilution Ratio</b>	WB 1:1000-1:2000,IHC 1:100-1:200,IP 1:20-1:50
<b>Molecular Weight</b>	16 kDa

**Antigen Information**

<b>Gene Name</b>	Survivin
<b>Alternative Names</b>	API4;Apoptosis inhibitor survivin;BIRC 5;EPR 1;IAP4;SVV;TIAP;Survivin
<b>Gene ID</b>	
<b>SwissProt ID</b>	O70201(mouse)(human:O15392)
<b>Immunogen</b>	A synthesized peptide derived from mouse Survivin

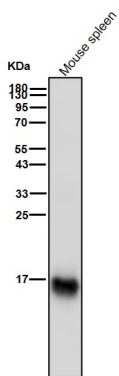
**Background**

Multitasking protein that has dual roles in promoting cell proliferation and preventing apoptosis. Component of a chromosome passage protein complex (CPC) which is essential for chromosome alignment and segregation during mitosis and

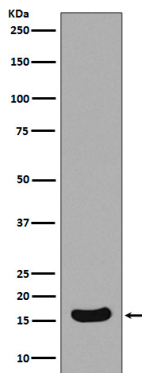
cytokinesis.

## Research Area

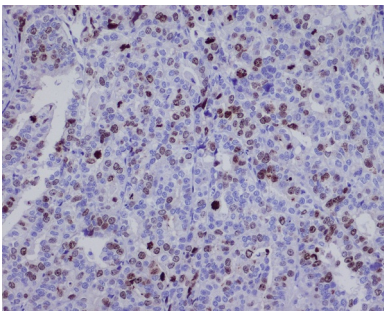
## Image Data



All lanes use the Antibody at 1:2K dilution for 1 hour at room temperature.



Western blot analysis of Survivin expression in Neuro-2a cell lysate.



Immunohistochemical analysis of paraffin-embedded mouse ovarian cancer, using Survivin Antibody.