
Product Name: Insulin Rabbit Monoclonal Antibody**Catalog #: AMRe83768**

For research use only.

Summary

Description	Recombinant rabbit monoclonal antibody
Host	Rabbit
Application	IHC,ICC/IF,ICC
Reactivity	Human,Mouse,Rat
Conjugation	Unconjugated
Modification	Unmodified
Isotype	IgG
Clonality	Monoclonal
Form	Liquid
Concentration	0.38mg/ml. The concentration of this product may be batch-dependent.
Storage	Aliquot and store at -20°C (valid for 12 months). Avoid freeze/thaw cycles.
Shipping	Ice bags
Buffer	Purified antibody in PBS with 0.05% sodium azide,0.05% protective protein and 50% glycerol.
Purification	Affinity Purification

Application

Dilution Ratio	IHC 1:100-1:200,ICC/IF 1:50-1:200,ICC 1:50-1:200
Molecular Weight	12 kDa

Antigen Information

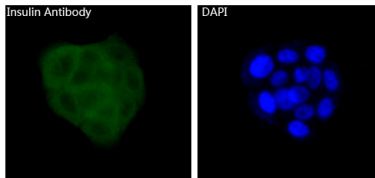
Gene Name	Insulin
Alternative Names	ILPR; IRDN; IDDM2; MODY10; Insulin; Insulin; INS;;Insulin
Gene ID	
SwissProt ID	P01308
Immunogen	A synthesized peptide derived from human Insulin

Background

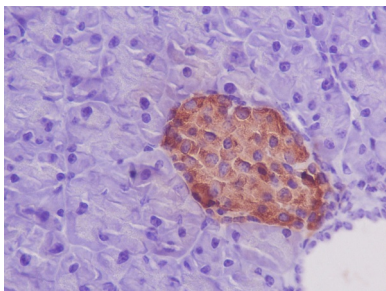
Insulin decreases blood glucose concentration. It increases cell permeability to monosaccharides, amino acids and fatty acids. It accelerates glycolysis, the pentose phosphate cycle, and glycogen synthesis in liver.

Research Area

Image Data



Immunofluorescent analysis of BxPC-3 cells, using Insulin Antibody .



Immunohistochemical analysis of paraffin-embedded mouse pancreas, using Insulin Antibody.