
Product Name: Ceruloplasmin Rabbit Monoclonal Antibody**Catalog #: AMRe83759**

For research use only.

Summary

Description	Recombinant rabbit monoclonal antibody
Host	Rabbit
Application	WB
Reactivity	Human,Rat
Conjugation	Unconjugated
Modification	Unmodified
Isotype	IgG
Clonality	Monoclonal
Form	Liquid
Concentration	0.38mg/ml. The concentration of this product may be batch-dependent.
Storage	Aliquot and store at -20°C (valid for 12 months). Avoid freeze/thaw cycles.
Shipping	Ice bags
Buffer	Purified antibody in PBS with 0.05% sodium azide,0.05% protective protein and 50% glycerol.
Purification	Affinity Purification

Application

Dilution Ratio	WB 1:1000-1:2000
Molecular Weight	Calculated MW: 122 kDa ; Observed MW: 140 kDa

Antigen Information

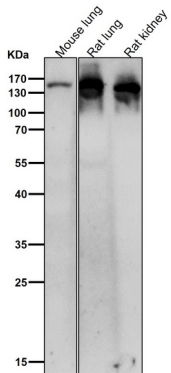
Gene Name	Ceruloplasmin
Alternative Names	Ceruloplasmin; CP2; Ferroxidase;;Ceruloplasmin
Gene ID	
SwissProt ID	P00450
Immunogen	A synthesized peptide derived from human Ceruloplasmin

Background

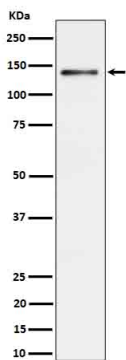
Multifunctional blue, copper-binding (6-7 atoms per molecule) glycoprotein. It has ferroxidase activity oxidizing Fe²⁺ to Fe³⁺ without releasing radical oxygen species. It is involved in iron transport across the cell membrane.

Research Area

Image Data



All lanes use the Antibody at 1:2K dilution for 1 hour at room temperature.



Western blot analysis of Ceruloplasmin expression in Rat liver cell lysate.