
Product Name: CABP Rabbit Monoclonal Antibody**Catalog #: AMRe83757**

For research use only.

Summary

| | |
|----------------------|---|
| Description | Recombinant rabbit monoclonal antibody |
| Host | Rabbit |
| Application | WB,ICC |
| Reactivity | Human,Mouse |
| Conjugation | Unconjugated |
| Modification | Unmodified |
| Isotype | IgG |
| Clonality | Monoclonal |
| Form | Liquid |
| Concentration | 0.49mg/ml. The concentration of this product may be batch-dependent. |
| Storage | Aliquot and store at -20°C (valid for 12 months). Avoid freeze/thaw cycles. |
| Shipping | Ice bags |
| Buffer | Purified antibody in PBS with 0.05% sodium azide,0.05% protective protein and 50% glycerol. |
| Purification | Affinity Purification |

Application

| | |
|-------------------------|---|
| Dilution Ratio | WB 1:1000-1:2000,ICC 1:50-1:200 |
| Molecular Weight | Calculated MW: 40 kDa ; Observed MW: 45 kDa |

Antigen Information

| | |
|--------------------------|--|
| Gene Name | CABP |
| Alternative Names | CaBP1; Calbrain; Calcium binding protein 1; Calcium binding protein 5; Caldendrin; HCALB BR;;Calcium binding protein 1 |
| Gene ID | |
| SwissProt ID | Q9NZU7 |
| Immunogen | A synthesized peptide derived from human Calcium binding protein 1 |

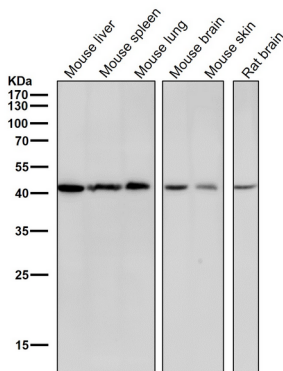
Background

Modulates calcium-dependent activity of inositol 1,4,5-triphosphate receptors.Inhibits agonist-induced intracellular calcium

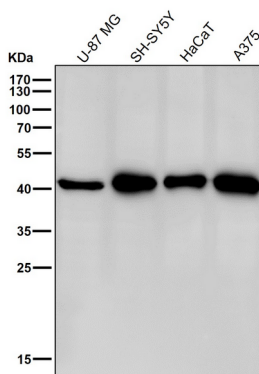
signaling. Enhances inactivation and does not support calcium-dependent facilitation of voltage-dependent P/Q-type calcium channels.

Research Area

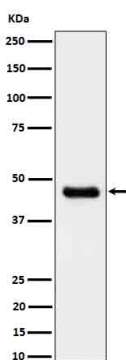
Image Data



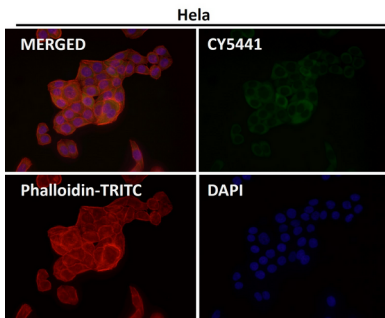
All lanes use the Antibody at 1:2K dilution for 1 hour at room temperature.



All lanes use the Antibody at 1:2K dilution for 1 hour at room temperature.



Western blot analysis of CABP expression in U-87 MG cell lysate.



Immunofluorescent analysis using the Antibody at 1:50 dilution.