

---

**Product Name: PSIP1/LEDGF Rabbit Monoclonal Antibody****Catalog #: AMRe83756**

For research use only.

**Summary**

<b>Description</b>	Recombinant rabbit monoclonal antibody
<b>Host</b>	Rabbit
<b>Application</b>	WB,IHC,ICC/IF,ICC
<b>Reactivity</b>	Human
<b>Conjugation</b>	Unconjugated
<b>Modification</b>	Unmodified
<b>Isotype</b>	IgG
<b>Clonality</b>	Monoclonal
<b>Form</b>	Liquid
<b>Concentration</b>	0.38mg/ml. The concentration of this product may be batch-dependent.
<b>Storage</b>	Aliquot and store at -20°C (valid for 12 months). Avoid freeze/thaw cycles.
<b>Shipping</b>	Ice bags
<b>Buffer</b>	Purified antibody in PBS with 0.05% sodium azide,0.05% protective protein and 50% glycerol.
<b>Purification</b>	Affinity Purification

**Application**

<b>Dilution Ratio</b>	WB 1:1000-1:2000,IHC 1:100-1:200,ICC/IF 1:50-1:200,ICC 1:50-1:200
<b>Molecular Weight</b>	Calculated MW: 60 kDa ; Observed MW: 75 kDa

**Antigen Information**

<b>Gene Name</b>	PSIP1/LEDGF
<b>Alternative Names</b>	DFS70; LEDGF; p52; p75; PAIP; Psip1; PSIP2;;PSIP1
<b>Gene ID</b>	
<b>SwissProt ID</b>	O75475
<b>Immunogen</b>	A synthesized peptide derived from human PSIP1

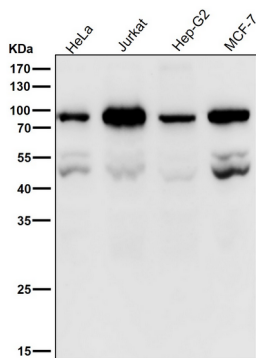
**Background**

Transcriptional coactivator involved in neuroepithelial stem cell differentiation and neurogenesis. Involved in particular in lens epithelial cell gene regulation and stress responses. May play an important role in lens epithelial to fiber cell terminal

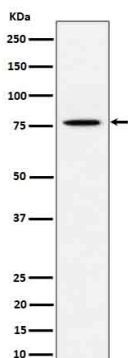
differentiation. May play a protective role during stress-induced apoptosis. Isoform 2 is a more general and stronger transcriptional coactivator. Isoform 2 may also act as an adapter to coordinate pre-mRNA splicing. Cellular cofactor for lentiviral integration.

## Research Area

## Image Data



All lanes use the Antibody at 1:2K dilution for 1 hour at room temperature.



Western blot analysis of PSIP1 / LEDGF expression in HeLa cell lysate.