

---

**Product Name: SEC14L2/TAP Rabbit Monoclonal Antibody****Catalog #: AMRe83755**

For research use only.

**Summary**

<b>Description</b>	Recombinant rabbit monoclonal antibody
<b>Host</b>	Rabbit
<b>Application</b>	WB,IHC,ICC/IF,ICC
<b>Reactivity</b>	Human,Mouse,Rat
<b>Conjugation</b>	Unconjugated
<b>Modification</b>	Unmodified
<b>Isotype</b>	IgG
<b>Clonality</b>	Monoclonal
<b>Form</b>	Liquid
<b>Concentration</b>	0.49mg/ml. The concentration of this product may be batch-dependent.
<b>Storage</b>	Aliquot and store at -20°C (valid for 12 months). Avoid freeze/thaw cycles.
<b>Shipping</b>	Ice bags
<b>Buffer</b>	Purified antibody in PBS with 0.05% sodium azide,0.05% protective protein and 50% glycerol.
<b>Purification</b>	Affinity Purification

**Application**

<b>Dilution Ratio</b>	WB 1:1000-1:2000,IHC 1:100-1:200,ICC/IF 1:50-1:200,ICC 1:50-1:200
<b>Molecular Weight</b>	Calculated MW: 46 kDa ; Observed MW: 40 kDa

**Antigen Information**

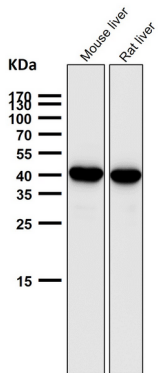
<b>Gene Name</b>	SEC14L2/TAP
<b>Alternative Names</b>	hTAP; SEC14 like 2; Sec14l2; SPF; Squalene transfer protein; TAP; TAP1;;SEC14L2
<b>Gene ID</b>	
<b>SwissProt ID</b>	O76054
<b>Immunogen</b>	A synthesized peptide derived from human SEC14L2

**Background**

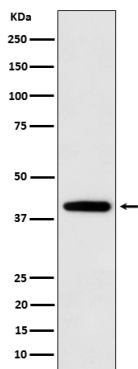
Carrier protein. Binds to some hydrophobic molecules and promotes their transfer between the different cellular sites. Binds with high affinity to alpha-tocopherol. Also binds with a weaker affinity to other tocopherols and to tocotrienols.

## Research Area

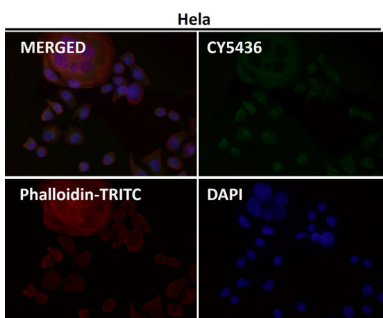
## Image Data



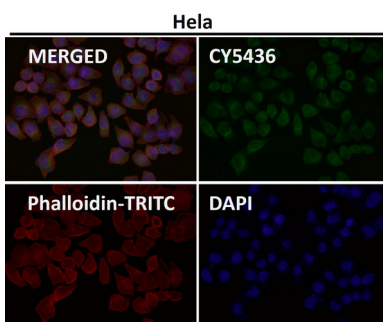
All lanes use the Antibody at 1:2K dilution for 1 hour at room temperature.



Western blot analysis of SEC14L2 / TAP expression in U87-MG cell lysate.



Immunofluorescent analysis using the Antibody at 1:150 dilution.



Immunofluorescent analysis using the Antibody at 1:50 dilution.

