

Product Name: beta II Tubulin Rabbit Monoclonal Antibody**Catalog #: AMRe83748**

For research use only.

Summary

Description	Recombinant rabbit monoclonal antibody
Host	Rabbit
Application	WB,IHC,ICC/IF,ICC,FC,IP
Reactivity	Human,Mouse,Rat
Conjugation	Unconjugated
Modification	Unmodified
Isotype	IgG
Clonality	Monoclonal
Form	Liquid
Concentration	0.49mg/ml. The concentration of this product may be batch-dependent.
Storage	Aliquot and store at -20°C (valid for 12 months). Avoid freeze/thaw cycles.
Shipping	Ice bags
Buffer	Purified antibody in PBS with 0.05% sodium azide,0.05% protective protein and 50% glycerol.
Purification	Affinity Purification

Application

Dilution Ratio	WB 1:1000-1:2000,IHC 1:100-1:200,ICC/IF 1:50-1:200,ICC 1:50-1:200,FC 1:20-1:100,IP 1:20-1:50
Molecular Weight	50 kDa

Antigen Information

Gene Name	beta II Tubulin
Alternative Names	class II beta tubulin isotype; Beta2; Tubulin beta 2 chain; TUBB; TUBB2;;beta 4B/2A/2B Tubulin
Gene ID	
SwissProt ID	P68371/Q13885/Q9BVA1
Immunogen	A synthesized peptide derived from human beta 4B Tubulin

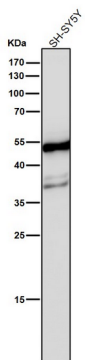
Background

Tubulin is the major constituent of microtubules. It binds two moles of GTP, one at an exchangeable site on the beta chain and one at a non-exchangeable site on the alpha chain.

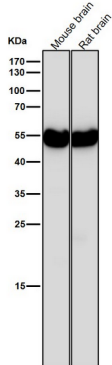
Research Area

Image Data

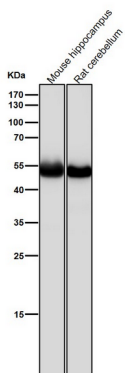
All lanes use the Antibody at 1:2K dilution for 1 hour at room temperature.

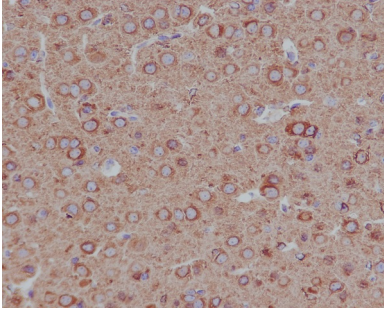


All lanes use the Antibody at 1:2K dilution for 1 hour at room temperature.



All lanes use the Antibody at 1:2K dilution for 1 hour at room temperature.





Immunohistochemical analysis of paraffin-embedded mouse brain, using beta II Tubulin Antibody.