

Product Name: CXCR4 Rabbit Monoclonal Antibody**Catalog #: AMRe83746**

For research use only.

Summary

Description	Recombinant rabbit monoclonal antibody
Host	Rabbit
Application	WB,IHC,ICC/IF,ICC
Reactivity	Human,Mouse
Conjugation	Unconjugated
Modification	Unmodified
Isotype	IgG
Clonality	Monoclonal
Form	Liquid
Concentration	0.34mg/ml. The concentration of this product may be batch-dependent.
Storage	Aliquot and store at -20°C (valid for 12 months). Avoid freeze/thaw cycles.
Shipping	Ice bags
Buffer	Purified antibody in PBS with 0.05% sodium azide,0.05% protective protein and 50% glycerol.
Purification	Affinity Purification

Application

Dilution Ratio	WB 1:500-1:1000,IHC 1:100-1:200,ICC/IF 1:50-1:200,ICC 1:50-1:200
Molecular Weight	Calculated MW: 40 kDa ; Observed MW: 43 kDa

Antigen Information

Gene Name	CXCR4
Alternative Names	CD184 ; CXCR4; C-X-C chemokine receptor type 4; FB22; Fusin; HM89; LCR1; LESTR; NPYRL; SDF-1 receptor; Stromal cell- derived factor 1 receptor;;CXCR4
Gene ID	
SwissProt ID	P61073
Immunogen	A synthesized peptide derived from human CXCR4

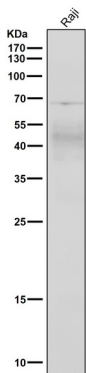
Background

Receptor for the C-X-C chemokine CXCL12/SDF-1 that transduces a signal by increasing intracellular calcium ions levels and

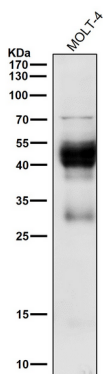
enhancing MAPK1/MAPK3 activation. Acts as a receptor for extracellular ubiquitin; leading to enhance intracellular calcium ions and reduce cellular cAMP levels. Involved in haematopoiesis and in cardiac ventricular septum formation. Plays also an essential role in vascularization of the gastrointestinal tract, probably by regulating vascular branching and/or remodeling processes in endothelial cells. Could be involved in cerebellar development.

Research Area

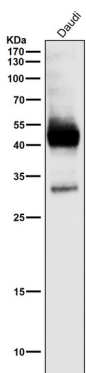
Image Data



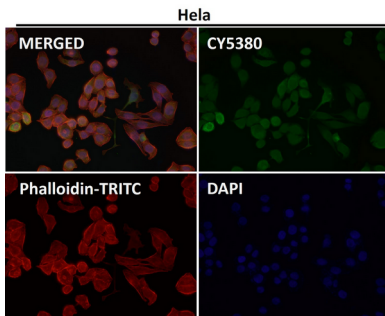
All lanes use the Antibody at 1:500 dilution for 1 hour at room temperature.



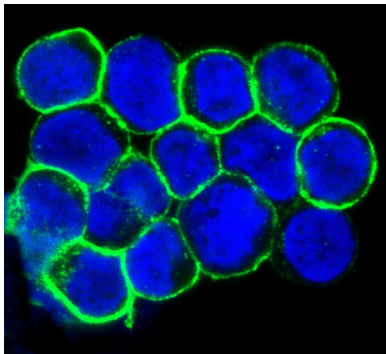
All lanes use the Antibody at 1:500 dilution for 1 hour at room temperature.



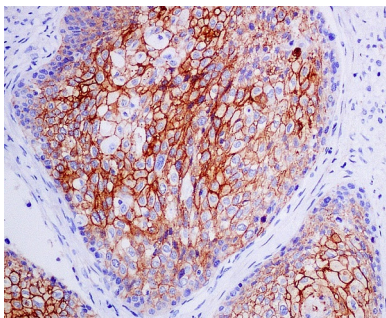
All lanes use the Antibody at 1:500 dilution for 1 hour at room temperature.



Immunofluorescent analysis using the Antibody at 1:50 dilution.



Immunofluorescent analysis of Jurkat cells, using CXCR4 Antibody .



Immunohistochemical analysis of paraffin-embedded human cervical carcinoma, using CXCR4 Antibody.