

**Product Name: RNF7 Rabbit Monoclonal Antibody****Catalog #: AMRe83745**

For research use only.

**Summary**

<b>Description</b>	Recombinant rabbit monoclonal antibody
<b>Host</b>	Rabbit
<b>Application</b>	WB,IHC,ICC/IF,ICC
<b>Reactivity</b>	Human,Mouse,Rat
<b>Conjugation</b>	Unconjugated
<b>Modification</b>	Unmodified
<b>Isotype</b>	IgG
<b>Clonality</b>	Monoclonal
<b>Form</b>	Liquid
<b>Concentration</b>	0.38mg/ml. The concentration of this product may be batch-dependent.
<b>Storage</b>	Aliquot and store at -20°C (valid for 12 months). Avoid freeze/thaw cycles.
<b>Shipping</b>	Ice bags
<b>Buffer</b>	Purified antibody in PBS with 0.05% sodium azide,0.05% protective protein and 50% glycerol.
<b>Purification</b>	Affinity Purification

**Application**

<b>Dilution Ratio</b>	WB 1:1000-1:2000,IHC 1:100-1:200,ICC/IF 1:50-1:200,ICC 1:50-1:200
<b>Molecular Weight</b>	13 kDa

**Antigen Information**

<b>Gene Name</b>	RNF7
<b>Alternative Names</b>	CKBBP1; Rbx2; RNF7; ROC2; SAG;;RNF7
<b>Gene ID</b>	
<b>SwissProt ID</b>	Q9UBF6
<b>Immunogen</b>	A synthesized peptide derived from human RNF7

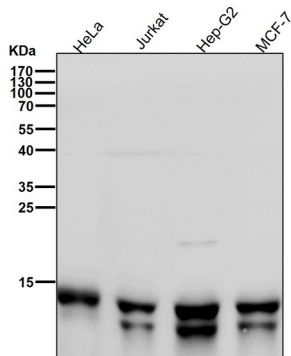
**Background**

Probable component of the SCF (SKP1-CUL1-F-box protein) E3 ubiquitin ligase complex which mediates the ubiquitination and subsequent proteasomal degradation of target proteins involved in cell cycle progression, signal transduction and

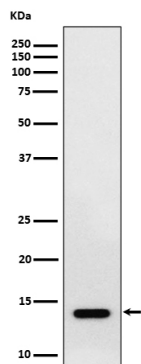
transcription. CRLs complexes and ARIH1 collaborate in tandem to mediate ubiquitination of target proteins, ARIH1 mediating addition of the first ubiquitin on CRLs targets.

## Research Area

## Image Data



All lanes use the Antibody at 1:2K dilution for 1 hour at room temperature.



Western blot analysis of RNF7 expression in HepG2 cell lysate.