

Product Name: PKC alpha Rabbit Monoclonal Antibody**Catalog #: AMRe83743**

For research use only.

Summary

Description	Recombinant rabbit monoclonal antibody
Host	Rabbit
Application	WB,IHC,ICC/IF,ICC,FC,IP
Reactivity	Human,Mouse,Rat
Conjugation	Unconjugated
Modification	Unmodified
Isotype	IgG
Clonality	Monoclonal
Form	Liquid
Concentration	0.19mg/ml. The concentration of this product may be batch-dependent.
Storage	Aliquot and store at -20°C (valid for 12 months). Avoid freeze/thaw cycles.
Shipping	Ice bags
Buffer	Purified antibody in PBS with 0.05% sodium azide,0.05% protective protein and 50% glycerol.
Purification	Affinity Purification

Application

Dilution Ratio	WB 1:1000-1:2000,IHC 1:100-1:200,ICC/IF 1:50-1:200,ICC 1:50-1:200,FC 1:20-1:100,IP 1:20-1:50
Molecular Weight	Calculated MW: 77 kDa ; Observed MW: 75 kDa

Antigen Information

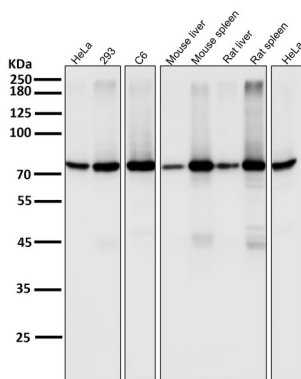
Gene Name	PKC alpha
Alternative Names	EC 2.7.11.13; KPCA; PKC III; PKC-A; PKC-III; PKC-alpha; PRKACA; PRKCA; Protein kinase C; alpha type; kinase PKC-alpha;;PKC alpha
Gene ID	
SwissProt ID	P17252
Immunogen	A synthesized peptide derived from human PKC alpha

Background

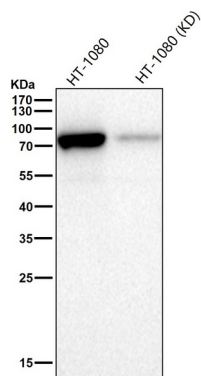
Calcium-activated, phospholipid- and diacylglycerol (DAG)-dependent serine/threonine-protein kinase that is involved in positive and negative regulation of cell proliferation, apoptosis, differentiation, migration and adhesion, tumorigenesis, cardiac hypertrophy, angiogenesis, platelet function and inflammation, by directly phosphorylating targets such as RAF1, BCL2, CSPG4, TNNT2/CTNT, or activating signaling cascade involving MAPK1/3 (ERK1/2) and RAP1GAP.

Research Area

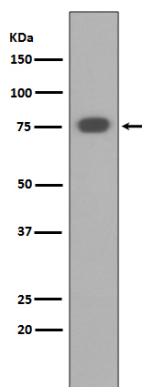
Image Data



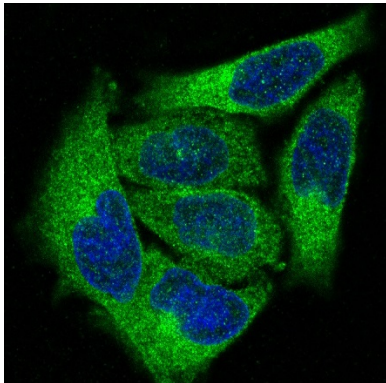
All lanes use the Antibody at 1:2K dilution for 1 hour at room temperature.



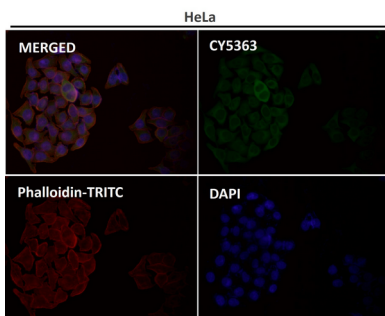
All lanes use the Antibody at 1:1K dilution for 1 hour at room temperature.



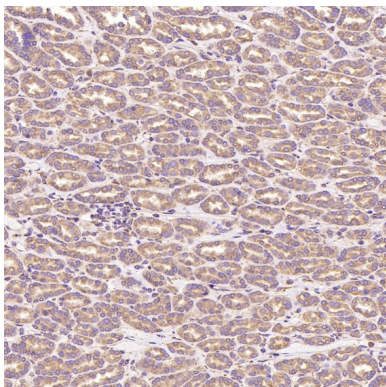
Western blot analysis of PKC alpha expression in HEK293 cell lysate.



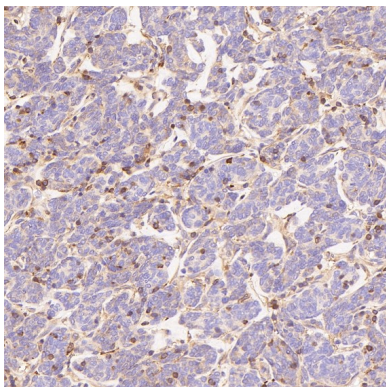
Immunofluorescent analysis of HeLa cells, using PKC alpha Antibody .



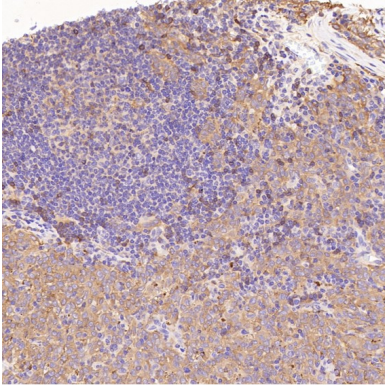
Immunofluorescent analysis using the Antibody at 1:50 dilution.



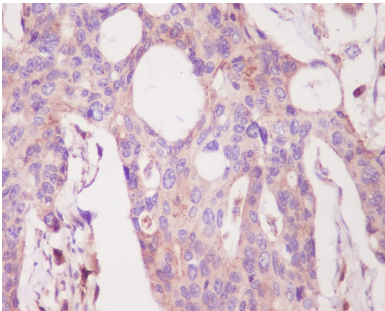
Immunohistochemical analysis of paraffin-embedded Human pituitary tumor, using the Antibody at 1:100 dilution.



Immunohistochemical analysis of paraffin-embedded Human thymoma, using the Antibody at 1:200 dilution.



Immunohistochemical analysis of paraffin-embedded Human melanoma, using the Antibody at 100 dilution.



Immunohistochemical analysis of paraffin-embedded human colon, using PKC alpha Antibody.