

Product Name: Calreticulin Rabbit Monoclonal Antibody**Catalog #: AMRe83741**

For research use only.

Summary

Description	Recombinant rabbit monoclonal antibody
Host	Rabbit
Application	WB,IHC,ICC/IF,ICC,FC,IP
Reactivity	Human,Mouse,Rat
Conjugation	Unconjugated
Modification	Unmodified
Isotype	IgG
Clonality	Monoclonal
Form	Liquid
Concentration	0.19mg/ml. The concentration of this product may be batch-dependent.
Storage	Aliquot and store at -20°C (valid for 12 months). Avoid freeze/thaw cycles.
Shipping	Ice bags
Buffer	Purified antibody in PBS with 0.05% sodium azide,0.05% protective protein and 50% glycerol.
Purification	Affinity Purification

Application

Dilution Ratio	WB 1:1000-1:2000,IHC 1:100-1:200,ICC/IF 1:50-1:200,ICC 1:50-1:200,FC 1:20-1:100,IP 1:20-1:50
Molecular Weight	Calculated MW: 48 kDa ; Observed MW: 55 kDa

Antigen Information

Gene Name	Calreticulin
Alternative Names	CALR; CRT; FLJ26680; RO; SSA; cC1Qr; CRP55; CRTC; HACBP;;Calreticulin
Gene ID	
SwissProt ID	P27797
Immunogen	A synthesized peptide derived from human Calreticulin

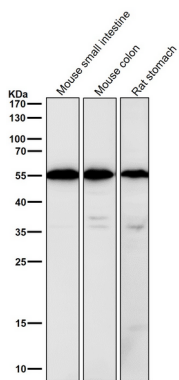
Background

Calcium is a universal signaling molecule involved in many cellular functions such as cell motility, metabolism, protein

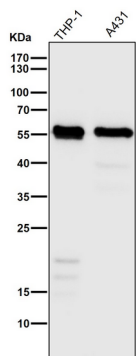
modification, protein folding and apoptosis. Calcium is stored in the endoplasmic reticulum (ER), where it is buffered by calcium binding chaperones such as calnexin and calreticulin, and is released via the IP3 Receptor.

Research Area

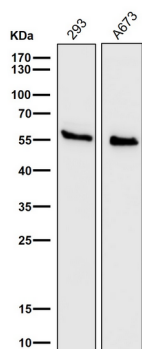
Image Data



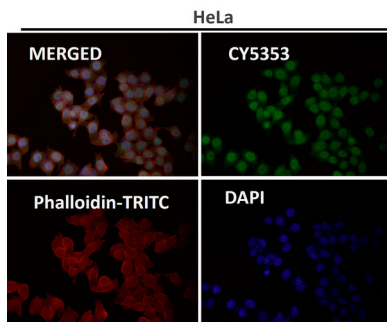
All lanes use the Antibody at 1:2K dilution for 1 hour at room temperature.



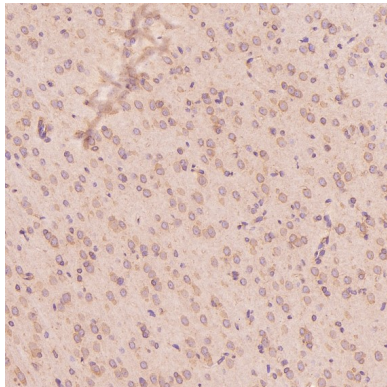
All lanes use the Antibody at 1:2K dilution for 1 hour at room temperature.



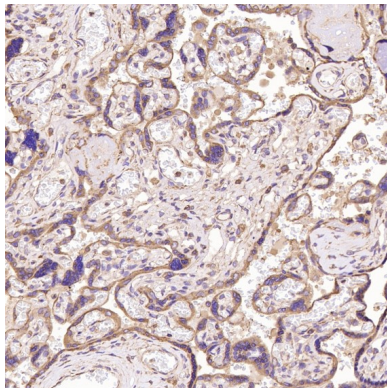
All lanes use the Antibody at 1:2K dilution for 1 hour at room temperature.



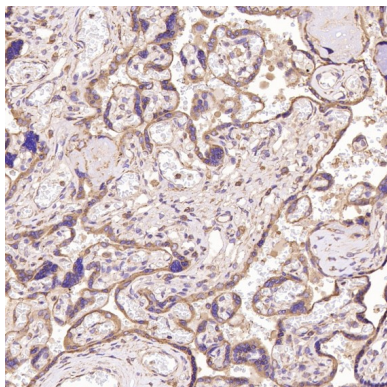
Immunofluorescent analysis using the Antibody at 1:50 dilution.



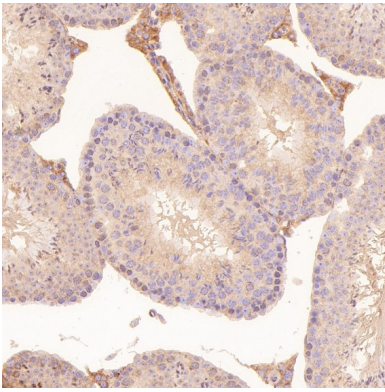
Immunohistochemical analysis of paraffin-embedded Rat cerebral cortex, using the Antibody at 1:150 dilution.



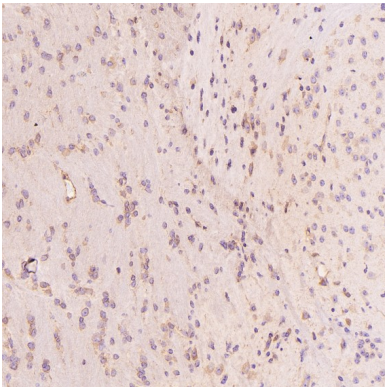
Immunohistochemical analysis of paraffin-embedded Human renal cancer, using the Antibody at 1:150 dilution.



Immunohistochemical analysis of paraffin-embedded Human placenta, using the Antibody at 1:150 dilution.



Immunohistochemical analysis of paraffin-embedded Mouse testis, using the Antibody at 1:150 dilution.



Immunohistochemical analysis of paraffin-embedded Mouse cerebellum, using the Antibody at 1:150 dilution.