

**Product Name: TCF3 Rabbit Monoclonal Antibody**  
**Catalog #: AMRe83733**



## Summary

<b>Production Name</b>	TCF3 Rabbit Monoclonal Antibody
<b>Description</b>	Rabbit Monoclonal antibody
<b>Host</b>	Rabbit
<b>Application</b>	WB,FC
<b>Reactivity</b>	Human

## Performance

<b>Conjugation</b>	Unconjugated
<b>Modification</b>	Unmodified
<b>Isotype</b>	IgG
<b>Clonality</b>	Monoclonal
<b>Form</b>	Liquid
<b>Storage</b>	Store at 4°C short term. Aliquot and store at -20°C long term. Avoid freeze/thaw cycles.
<b>Buffer</b>	Purified antibody in PBS with 0.05% sodium azide, 0.05% protective protein and 50% glycerol.
<b>Purification</b>	Affinity Purification

## Immunogen

<b>Gene Name</b>	TCF3
<b>Alternative Names</b>	Transcription factor 7-like 1; HMG box transcription factor 3; TCF-3; TCF7L1; TCF3;;TCF7L1
<b>Gene ID</b>	
<b>SwissProt ID</b>	Q9HCS4.A synthesized peptide derived from human TCF7L1

## Application

<b>Dilution Ratio</b>	WB:1:1000-1:2000,FC:1:20-1:100
<b>Molecular Weight</b>	63 kDa

**Product Name: TCF3 Rabbit Monoclonal Antibody**  
**Catalog #: AMRe83733**

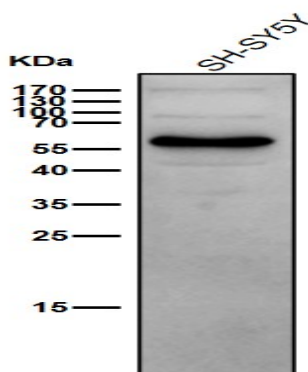


## Background

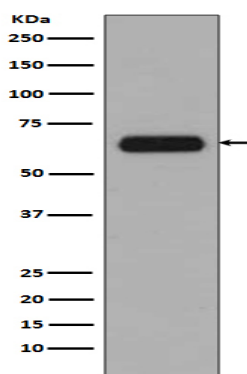
Participates in the Wnt signaling pathway. Binds to DNA and acts as a repressor in the absence of CTNNB1, and as an activator in its presence. Necessary for the terminal differentiation of epidermal cells, the formation of keratohyalin granules and the development of the barrier function of the epidermis.

## Research Area

## Image Data



All lanes use the Antibody at 1:2K dilution for 1 hour at room temperature.



Western blot analysis of TCF3 expression in A431 cell lysate.

## Note

For research use only.