

---

**Product Name: pan Cadherin Rabbit Monoclonal Antibody****Catalog #: AMRe83728**

For research use only.

**Summary**

<b>Description</b>	Recombinant rabbit monoclonal antibody
<b>Host</b>	Rabbit
<b>Application</b>	WB,IHC,ICC/IF,ICC,FC,IP
<b>Reactivity</b>	Human,Mouse,Rat
<b>Conjugation</b>	Unconjugated
<b>Modification</b>	Unmodified
<b>Isotype</b>	IgG
<b>Clonality</b>	Monoclonal
<b>Form</b>	Liquid
<b>Concentration</b>	0.39mg/ml. The concentration of this product may be batch-dependent.
<b>Storage</b>	Aliquot and store at -20°C (valid for 12 months). Avoid freeze/thaw cycles.
<b>Shipping</b>	Ice bags
<b>Buffer</b>	Purified antibody in PBS with 0.05% sodium azide,0.05% protective protein and 50% glycerol.
<b>Purification</b>	Affinity Purification

**Application**

<b>Dilution Ratio</b>	WB 1:1000-1:2000,IHC 1:100-1:200,ICC/IF 1:50-1:200,ICC 1:50-1:200,FC 1:20-1:100,IP 1:20-1:50
<b>Molecular Weight</b>	Calculated MW: 15-20,80-83 kDa ; Observed MW: 140 kDa

**Antigen Information**

<b>Gene Name</b>	pan Cadherin Cadherin;CDH3;CDHP;Cadherin-1;Cadherin-2;Cadherin-3;Cadherin-4;Cadherin-5;CAM120/80;CD144;CD324;CD325;Cdh4;CDH5;CDHE;CDHN;E-cadherin;N-cadherin;NCAD;Neural cadherin;P-cadherin;Uvomorulin;Vascular endothelial cadherin
<b>Alternative Names</b>	;Cadherin

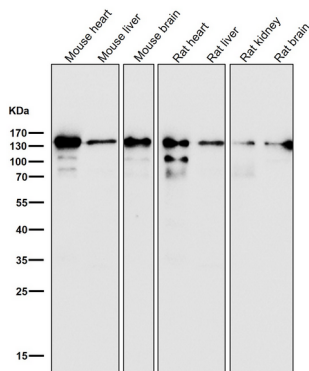
**Gene ID****SwissProt ID** P12830/P19022/P22223/P33151/P55283/P39038**Immunogen** A synthesized peptide derived from human Cadherin

## Background

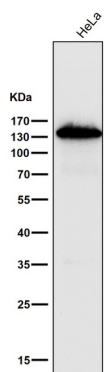
Cadherins are calcium-dependent cell adhesion proteins. They preferentially interact with themselves in a homophilic manner in connecting cells; cadherins may thus contribute to the sorting of heterogeneous cell types. CDH1 is involved in mechanisms regulating cell-cell adhesions, mobility and proliferation of epithelial cells.

## Research Area

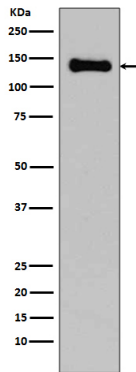
## Image Data



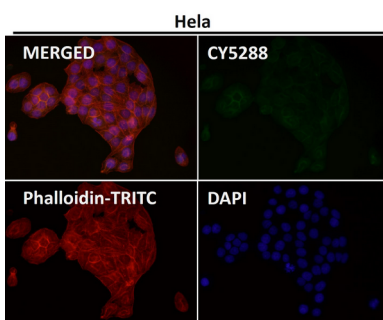
All lanes use the Antibody at 1:2K dilution for 1 hour at room temperature.



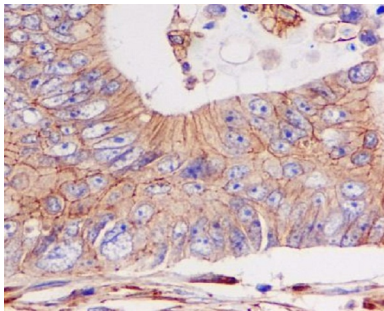
All lanes use the Antibody at 1:2K dilution for 1 hour at room temperature.



Western blot analysis of pan Cadherin expression in C6 cell lysate.



Immunofluorescent analysis using the Antibody at 1:50 dilution.



Immunohistochemical analysis of paraffin-embedded colon cancer, using pan Cadherin Antibody .