
Product Name: DAPKinase1 Rabbit Monoclonal Antibody**Catalog #: AMRe83727**

For research use only.

Summary

Description	Recombinant rabbit monoclonal antibody
Host	Rabbit
Application	WB,IHC,ICC/IF,ICC
Reactivity	Human,Mouse,Rat
Conjugation	Unconjugated
Modification	Unmodified
Isotype	IgG
Clonality	Monoclonal
Form	Liquid
Concentration	0.53mg/ml. The concentration of this product may be batch-dependent.
Storage	Aliquot and store at -20°C (valid for 12 months). Avoid freeze/thaw cycles.
Shipping	Ice bags
Buffer	Purified antibody in PBS with 0.05% sodium azide,0.05% protective protein and 50% glycerol.
Purification	Affinity Purification

Application

Dilution Ratio	WB 1:1000-1:2000,IHC 1:100-1:200,ICC/IF 1:50-1:200,ICC 1:50-1:200
Molecular Weight	160 kDa

Antigen Information

Gene Name	DAPKinase1
Alternative Names	DAK1; DAP K1; DAP kinase 1; DAPK 1; DAPK; DAPK1; DAPK1_HUMAN; Death Associated Protein Kinase 1; Death-associated protein kinase 1;;DAP kinase 1
Gene ID	
SwissProt ID	P53355
Immunogen	A synthesized peptide derived from human DAP kinase 1

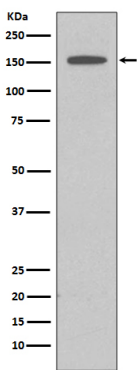
Background

Calcium/calmodulin-dependent serine/threonine kinase involved in multiple cellular signaling pathways that trigger cell

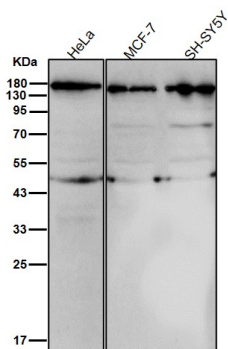
survival, apoptosis, and autophagy. Regulates both type I apoptotic and type II autophagic cell deaths signal, depending on the cellular setting. The former is caspase-dependent, while the latter is caspase-independent and is characterized by the accumulation of autophagic vesicles. Phosphorylates PIN1 resulting in inhibition of its catalytic activity, nuclear localization, and cellular function. Phosphorylates TPM1, enhancing stress fiber formation in endothelial cells. Phosphorylates STX1A and significantly decreases its binding to STXBP1.

Research Area

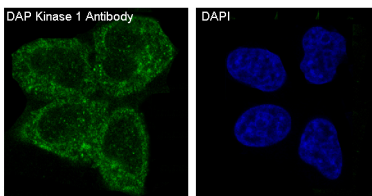
Image Data



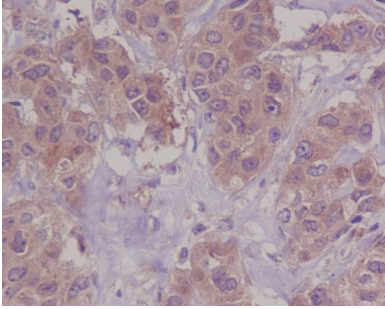
Western blot analysis of DAP Kinase 1 expression in HeLa cell lysate.



All lanes use the Antibody at 1:2k dilution for 1 hour at room temperature.



Immunofluorescent analysis of HeLa cells, using DAP Kinase 1 Antibody .



Immunohistochemical analysis of paraffin-embedded human breast cancer, using DAP Kinase 1 Antibody.