
Product Name: Notch 1 Rabbit Monoclonal Antibody**Catalog #: AMRe83723**

For research use only.

Summary

Description	Recombinant rabbit monoclonal antibody
Host	Rabbit
Application	WB,IHC,ICC/IF,ICC,FC
Reactivity	Human,Mouse
Conjugation	Unconjugated
Modification	Unmodified
Isotype	IgG
Clonality	Monoclonal
Form	Liquid
Concentration	0.39mg/ml. The concentration of this product may be batch-dependent.
Storage	Aliquot and store at -20°C (valid for 12 months). Avoid freeze/thaw cycles.
Shipping	Ice bags
Buffer	Purified antibody in PBS with 0.05% sodium azide,0.05% protective protein and 50% glycerol.
Purification	Affinity Purification

Application

Dilution Ratio	WB 1:1000-1:2000,IHC 1:100-1:200,ICC/IF 1:50-1:200,ICC 1:50-1:200,FC 1:20-1:100
Molecular Weight	Calculated MW: 273 kDa ; Observed MW: 125 kDa

Antigen Information

Gene Name	Notch 1
Alternative Names	NOTC1, NOTCH1, TAN1, hN1, neurogenic locus notch homolog protein 1, neurogenic locus notch homolog protein 1 precursor,;Notch 1
Gene ID	
SwissProt ID	P46531
Immunogen	A synthesized peptide derived from human Notch 1

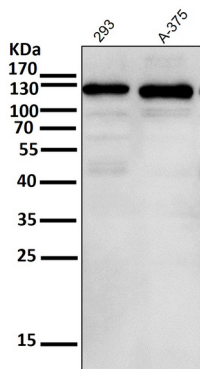
Background

Functions as a receptor for membrane-bound ligands Jagged1, Jagged2 and Delta1 to regulate cell-fate determination. Upon

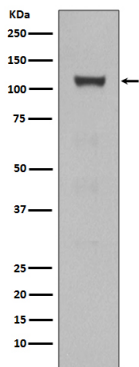
ligand activation through the released notch intracellular domain (NICD) it forms a transcriptional activator complex with RBPJ/RBPSUH and activates genes of the enhancer of split locus. Affects the implementation of differentiation, proliferation and apoptotic programs. Involved in angiogenesis; negatively regulates endothelial cell proliferation and migration and angiogenic sprouting.

Research Area

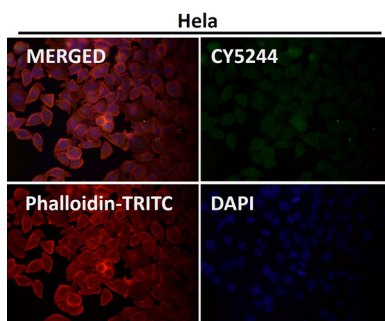
Image Data



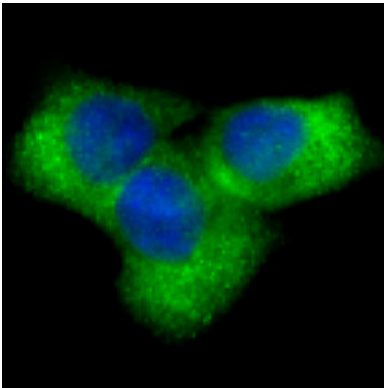
All lanes use the Antibody at 1:1K dilution for 1 hour at room temperature.



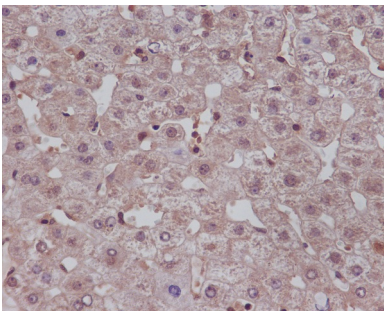
Western blot analysis of NOTCH1 expression in HEK293 cell lysate.



Immunofluorescent analysis using the Antibody at 1:50 dilution.



Immunofluorescent analysis of HeLa cells, using Notch1 Antibody .



Immunohistochemical analysis of paraffin-embedded human liver, using Notch1 Antibody .