

Product Name: CD86 Rabbit Monoclonal Antibody
Catalog #: AMRe83722



Summary

Production Name	CD86 Rabbit Monoclonal Antibody
Description	Rabbit Monoclonal antibody
Host	Rabbit
Application	WB,IP,IHC,ICC,FC,IF
Reactivity	Human,Mouse,Rat

Performance

Conjugation	Unconjugated
Modification	Unmodified
Isotype	IgG
Clonality	Monoclonal
Form	Liquid
Storage	Store at 4°C short term. Aliquot and store at -20°C long term. Avoid freeze/thaw cycles.
Buffer	Purified antibody in PBS with 0.05% sodium azide,0.05% protective protein and 50% glycerol.
Purification	Affinity Purification

Immunogen

Gene Name	CD86
Alternative Names	CD86;B7-2;B70;CD28LG2;LAB72;MGC34413; CTLA4 counter receptor B72; CLS1; Ly58; MB7;;CD86
Gene ID	
SwissProt ID	P42081.A synthesized peptide derived from human CD86

Application

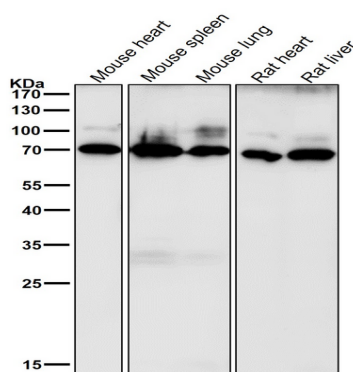
Dilution Ratio	WB:1:1000-1:2000,IP:1:20-1:50,IHC:1:100-1:200,IF:1:50-1:200,ICC:1:50-1:200,FC:1:20-1:100
Molecular Weight	Calculated MW: 38 kDa ; Observed MW: 70 kDa

Background

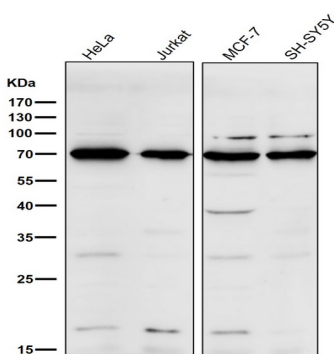
Receptor involved in the costimulatory signal essential for T-lymphocyte proliferation and interleukin-2 production, by binding CD28 or CTLA-4. May play a critical role in the early events of T-cell activation and costimulation of naive T-cells, such as deciding between immunity and anergy that is made by T-cells within 24 hours after activation. Also involved in the regulation of B cells function, plays a role in regulating the level of IgG1 produced. Upon CD40 engagement, activates NF-kappa-B signaling pathway via phospholipase C and protein kinase C activation.

Research Area

Image Data

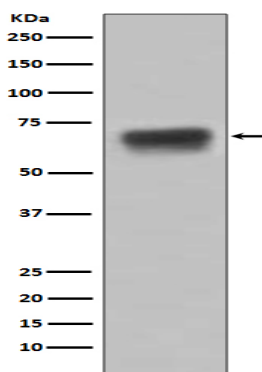


All lanes use the Antibody at 1:2K dilution for 1 hour at room temperature.

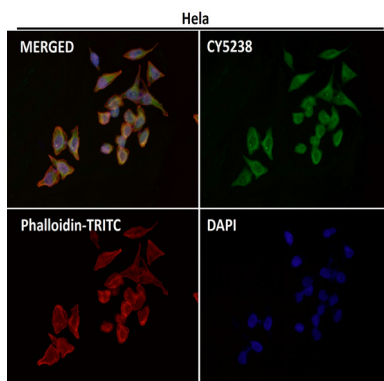


All lanes use the Antibody at 1:2K dilution for 1 hour at room temperature.

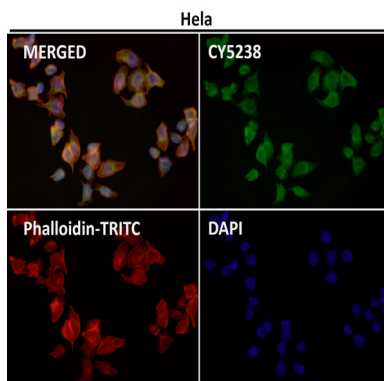
Product Name: CD86 Rabbit Monoclonal Antibody
Catalog #: AMRe83722



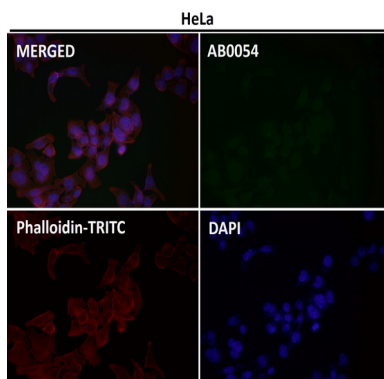
Western blot analysis of CD86 expression in Raji cell lysate.



Immunofluorescent analysis using the Antibody at 1:50 dilution.



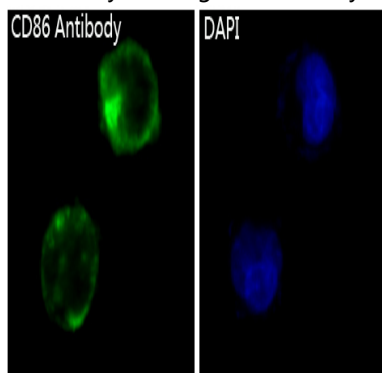
Immunofluorescent analysis using the Antibody at 1:50 dilution.



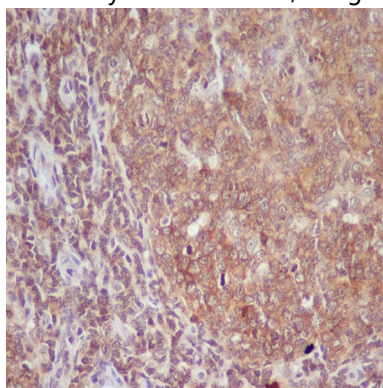
Product Name: CD86 Rabbit Monoclonal Antibody
Catalog #: AMRe83722



Immunofluorescent analysis using the Antibody at 1:150 dilution.



Immunofluorescent analysis of K562 cells, using CD86 Antibody .



Immunohistochemical analysis of paraffin-embedded human tonsil, using CD86 Antibody .

Note

For research use only.