

Product Name: STAT1 Rabbit Monoclonal Antibody**Catalog #: AMRe83720**

For research use only.

Summary

Description	Recombinant rabbit monoclonal antibody
Host	Rabbit
Application	WB,FC,IP
Reactivity	Human,Mouse
Conjugation	Unconjugated
Modification	Unmodified
Isotype	IgG
Clonality	Monoclonal
Form	Liquid
Concentration	0.55mg/ml. The concentration of this product may be batch-dependent.
Storage	Aliquot and store at -20°C (valid for 12 months). Avoid freeze/thaw cycles.
Shipping	Ice bags
Buffer	Purified antibody in PBS with 0.05% sodium azide,0.05% protective protein and 50% glycerol.
Purification	Affinity Purification

Application

Dilution Ratio	WB 1:1000-1:2000,FC 1:20-1:100,IP 1:20-1:50
Molecular Weight	Calculated MW: 87 kDa ; Observed MW: 84 kDa

Antigen Information

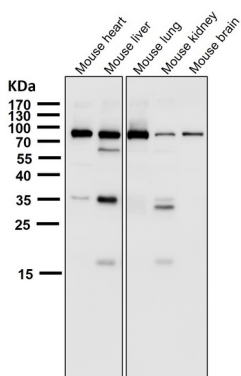
Gene Name	STAT1
Alternative Names	Signal transducer and activator of transcription 1; Signal transducer and activator of transcription 1-alpha/beta;Transcription factor ISGF-3 components p91/p84;ISGF3; CANDF7; STAT 1; Stat1;;STAT1
Gene ID	
SwissProt ID	P42224
Immunogen	A synthesized peptide derived from human STAT1

Background

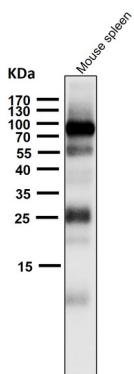
Following type I IFN (IFN-alpha and IFN-beta) binding to cell surface receptors, signaling via protein kinases leads to activation of Jak kinases (TYK2 and JAK1) and to tyrosine phosphorylation of STAT1 and STAT2. The phosphorylated STATs dimerize and associate with ISGF3G/IRF-9 to form a complex termed ISGF3 transcription factor, that enters the nucleus.

Research Area

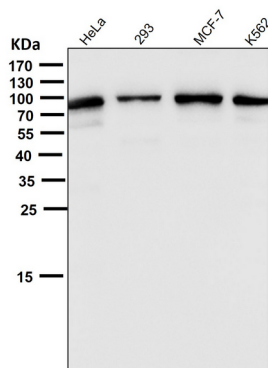
Image Data



All lanes use the Antibody at 1:2K dilution for 1 hour at room temperature.



All lanes use the Antibody at 1:2K dilution for 1 hour at room temperature.



All lanes use the Antibody at 1:2K dilution for 1 hour at room temperature.