
Product Name: NGF Rabbit Monoclonal Antibody**Catalog #: AMRe83718**

For research use only.

Summary

Description	Recombinant rabbit monoclonal antibody
Host	Rabbit
Application	WB,IHC,ICC/IF,ICC
Reactivity	Human,Mouse,Rat
Conjugation	Unconjugated
Modification	Unmodified
Isotype	IgG
Clonality	Monoclonal
Form	Liquid
Concentration	0.34mg/ml. The concentration of this product may be batch-dependent.
Storage	Aliquot and store at -20°C (valid for 12 months). Avoid freeze/thaw cycles.
Shipping	Ice bags
Buffer	Purified antibody in PBS with 0.05% sodium azide,0.05% protective protein and 50% glycerol.
Purification	Affinity Purification

Application

Dilution Ratio	WB 1:1000-1:2000,IHC 1:100-1:200,ICC/IF 1:50-1:200,ICC 1:50-1:200
Molecular Weight	27 kDa

Antigen Information

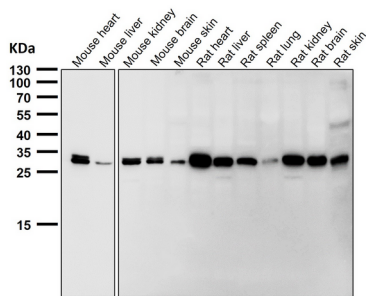
Gene Name	NGF
Alternative Names	NGF;Beta-NGF;HSAN5;MGC161426;MGC161428;NGFB;proNGF;;beta NGF
Gene ID	
SwissProt ID	P01138
Immunogen	A synthesized peptide derived from human beta NGF

Background

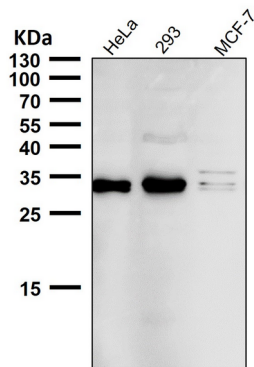
Nerve growth factor is important for the development and maintenance of the sympathetic and sensory nervous systems.

Research Area

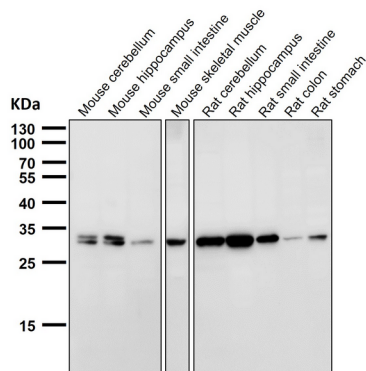
Image Data



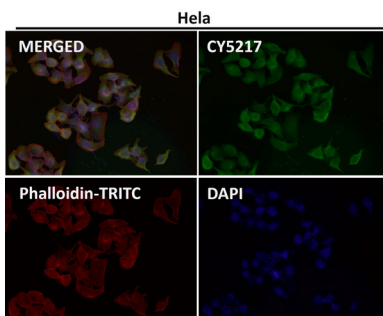
All lanes use the Antibody at 1:1K dilution for 1 hour at room temperature.



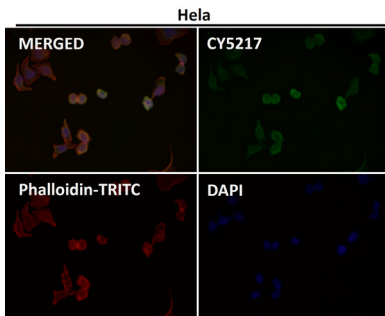
All lanes use the Antibody at 1:1K dilution for 1 hour at room temperature.



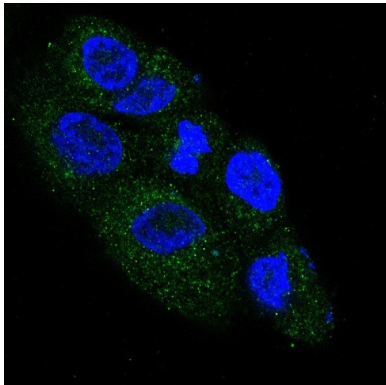
All lanes use the Antibody at 1:1K dilution for 1 hour at room temperature.



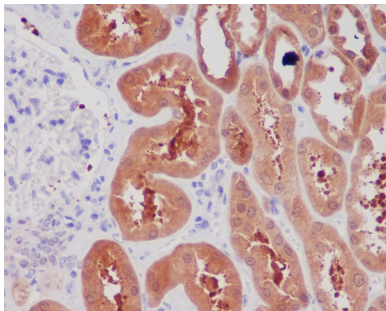
Immunofluorescent analysis using the Antibody at 1:50 dilution.



Immunofluorescent analysis using the Antibody at 1:150 dilution.



Immunofluorescent analysis of SH-SY5Y cells, using NGF Antibody.



Immunohistochemical analysis of paraffin-embedded human kidney, using NGF Antibody.