
Product Name: MHC class I Rabbit Monoclonal Antibody**Catalog #: AMRe83715**

For research use only.

Summary

Description	Recombinant rabbit monoclonal antibody
Host	Rabbit
Application	WB,IHC,ICC/IF,ICC,FC,IP
Reactivity	Human
Conjugation	Unconjugated
Modification	Unmodified
Isotype	IgG
Clonality	Monoclonal
Form	Liquid
Concentration	0.53mg/ml. The concentration of this product may be batch-dependent.
Storage	Aliquot and store at -20°C (valid for 12 months). Avoid freeze/thaw cycles.
Shipping	Ice bags
Buffer	Purified antibody in PBS with 0.05% sodium azide,0.05% protective protein and 50% glycerol.
Purification	Affinity Purification

Application

Dilution Ratio	WB 1:1000-1:2000,IHC 1:100-1:200,ICC/IF 1:50-1:200,ICC 1:50-1:200,FC 1:20-1:100,IP 1:20-1:50
Molecular Weight	41 kDa

Antigen Information

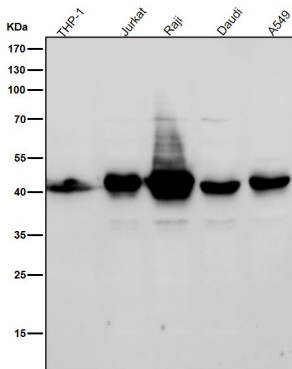
Gene Name	MHC class I
Alternative Names	Aw-68;HLA class I histocompatibility antigen, A-28 alpha chain;MHC class I antigen A*68;HLA-A; MHC class I antigen HLA A heavy chain;;HLA A
Gene ID	
SwissProt ID	P01891
Immunogen	A synthesized peptide derived from human HLA A

Background

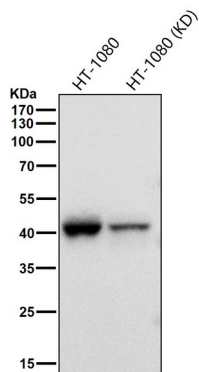
Antigen-presenting major histocompatibility complex class I (MHC I) molecule. In complex with B2M/beta 2 microglobulin displays primarily viral and tumor-derived peptides on antigen-presenting cells for recognition by alpha-beta T cell receptor (TCR) on HLA-A-restricted CD8-positive T cells, guiding antigen-specific T cell immune response to eliminate infected or transformed cells.

Research Area

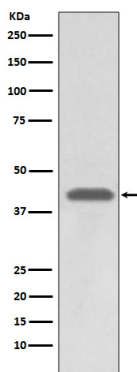
Image Data



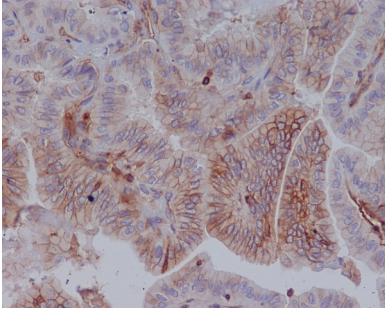
All lanes use the Antibody at 1:2K dilution for 1 hour at room temperature.



All lanes use the Antibody at 1:1K dilution for 1 hour at room temperature.



Western blot analysis of MHC class 1 expression in A549 cell lysate.



Immunohistochemical analysis of paraffin-embedded human thyroid carcinoma, using MHC class 1 Antibody.