

---

**Product Name: TRAM2 Rabbit Monoclonal Antibody****Catalog #: AMRe83714**

For research use only.

**Summary**

<b>Description</b>	Recombinant rabbit monoclonal antibody
<b>Host</b>	Rabbit
<b>Application</b>	WB
<b>Reactivity</b>	Human,Mouse,Rat
<b>Conjugation</b>	Unconjugated
<b>Modification</b>	Unmodified
<b>Isotype</b>	IgG
<b>Clonality</b>	Monoclonal
<b>Form</b>	Liquid
<b>Concentration</b>	
<b>Storage</b>	Aliquot and store at -20°C (valid for 12 months). Avoid freeze/thaw cycles.
<b>Shipping</b>	Ice bags
<b>Buffer</b>	Purified antibody in PBS with 0.05% sodium azide,0.05% protective protein and 50% glycerol.
<b>Purification</b>	Affinity Purification

**Application**

<b>Dilution Ratio</b>	WB 1:1000-1:2000
<b>Molecular Weight</b>	43 kDa

**Antigen Information**

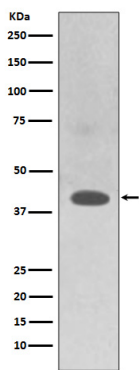
<b>Gene Name</b>	TRAM2 KIAA0057;TRAM like protein;Tram2;Translocating chain associating membrane protein
<b>Alternative Names</b>	2;Translocation associated membrane protein 2 ;TRAM2
<b>Gene ID</b>	
<b>SwissProt ID</b>	Q15035
<b>Immunogen</b>	A synthesized peptide derived from human TRAM2

**Background**

Necessary for collagen type I synthesis. May couple the activity of the ER Ca<sup>2+</sup> pump SERCA2B with the activity of the translocon. This coupling may increase the local Ca<sup>2+</sup> concentration at the site of collagen synthesis, and a high Ca<sup>2+</sup> concentration may be necessary for the function of molecular chaperones involved in collagen folding. Required for proper insertion of the first transmembrane helix N-terminus of TM4SF20 into the ER lumen, may act as a ceramide sensor for regulated alternative translocation (RAT).

## Research Area

## Image Data



Western blot analysis of TRAM2 expression in HepG2 cell lysate.