

Product Name: Talin2 Rabbit Monoclonal Antibody**Catalog #: AMRe83713**

For research use only.

Summary

| | |
|----------------------|---|
| Description | Recombinant rabbit monoclonal antibody |
| Host | Rabbit |
| Application | WB |
| Reactivity | Human,Mouse,Rat |
| Conjugation | Unconjugated |
| Modification | Unmodified |
| Isotype | IgG |
| Clonality | Monoclonal |
| Form | Liquid |
| Concentration | |
| Storage | Aliquot and store at -20°C (valid for 12 months). Avoid freeze/thaw cycles. |
| Shipping | Ice bags |
| Buffer | Purified antibody in PBS with 0.05% sodium azide,0.05% protective protein and 50% glycerol. |
| Purification | Affinity Purification |

Application

| | |
|-------------------------|---|
| Dilution Ratio | WB 1:1000-1:2000 |
| Molecular Weight | Calculated MW: 272 kDa ; Observed MW: 270 kDa |

Antigen Information

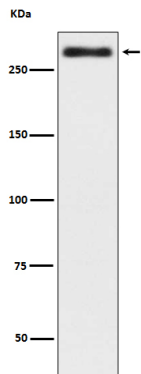
| | |
|--------------------------|---|
| Gene Name | Talin2 |
| Alternative Names | DKFZp451B1011;ILWEQ;Talin-2;talin2;TLN 2;TLN2;Talin 2 |
| Gene ID | |
| SwissProt ID | Q9Y4G6 |
| Immunogen | A synthesized peptide derived from human Talin 2 |

Background

As a major component of focal adhesion plaques that links integrin to the actin cytoskeleton, may play an important role in cell adhesion. Recruits PIP5K1C to focal adhesion plaques and strongly activates its kinase activity.

Research Area

Image Data



Western blot analysis of Talin 2 in expression HeLa cell lysate.