

---

**Product Name: TRAF6 Rabbit Monoclonal Antibody****Catalog #: AMRe83710**

For research use only.

**Summary**

<b>Description</b>	Recombinant rabbit monoclonal antibody
<b>Host</b>	Rabbit
<b>Application</b>	WB,IHC,FC
<b>Reactivity</b>	Human,Mouse,Rat
<b>Conjugation</b>	Unconjugated
<b>Modification</b>	Unmodified
<b>Isotype</b>	IgG
<b>Clonality</b>	Monoclonal
<b>Form</b>	Liquid
<b>Concentration</b>	0.19mg/ml. The concentration of this product may be batch-dependent.
<b>Storage</b>	Aliquot and store at -20°C (valid for 12 months). Avoid freeze/thaw cycles.
<b>Shipping</b>	Ice bags
<b>Buffer</b>	Purified antibody in PBS with 0.05% sodium azide,0.05% protective protein and 50% glycerol.
<b>Purification</b>	Affinity Purification

**Application**

<b>Dilution Ratio</b>	WB 1:1000-1:2000,IHC 1:100-1:200,FC 1:20-1:100
<b>Molecular Weight</b>	Calculated MW: 60 kDa ; Observed MW: 58 kDa

**Antigen Information**

<b>Gene Name</b>	TRAF6
<b>Alternative Names</b>	TNF receptor-associated factor 6; E3 ubiquitin-protein ligase TRAF6; Interleukin-1 signal transducer; RING finger protein 85; TRAF6; RNF85; TRAF 6; TRAF-6;;TRAF6
<b>Gene ID</b>	
<b>SwissProt ID</b>	Q9Y4K3
<b>Immunogen</b>	A synthesized peptide derived from human TRAF6

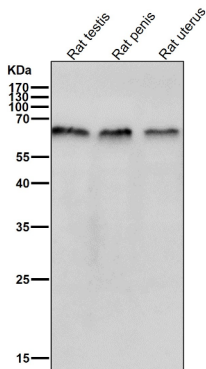
**Background**

E3 ubiquitin ligase that, together with UBE2N and UBE2V1, mediates the synthesis of 'Lys-63'-linked-polyubiquitin chains

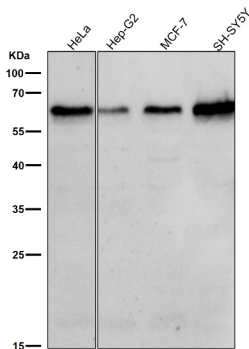
conjugated to proteins, such as ECSIT, IKBKG, IRAK1, AKT1 and AKT2. Also mediates ubiquitination of free/unanchored polyubiquitin chain that leads to MAP3K7 activation.

## Research Area

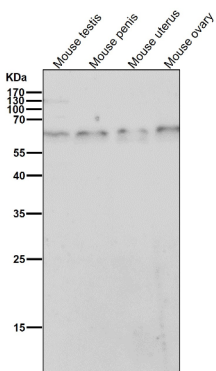
## Image Data



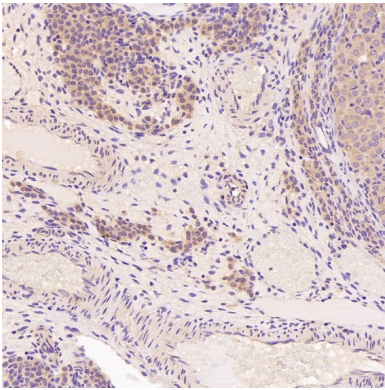
All lanes use the Antibody at 1:2K dilution for 1 hour at room temperature.



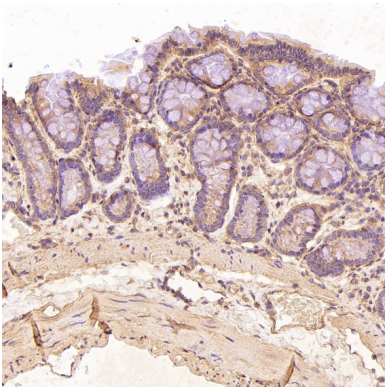
All lanes use the Antibody at 1:2K dilution for 1 hour at room temperature.



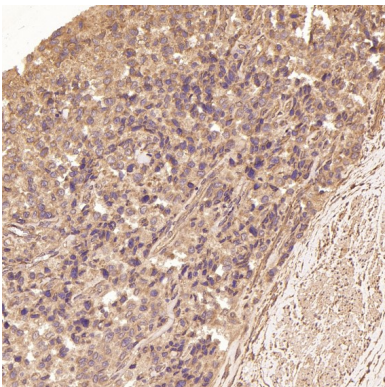
All lanes use the Antibody at 1:2K dilution for 1 hour at room temperature.



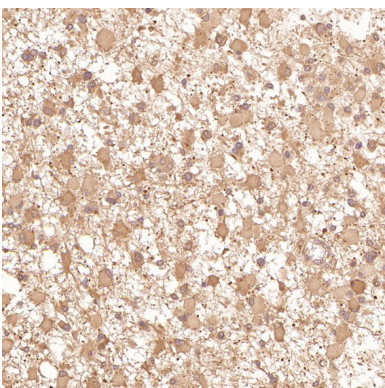
Immunohistochemical analysis of paraffin-embedded Rat ovary, using the Antibody at 1:100 dilution.



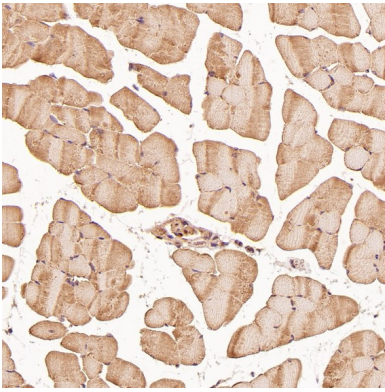
Immunohistochemical analysis of paraffin-embedded Rat stomach, using the Antibody at 1:100 dilution.



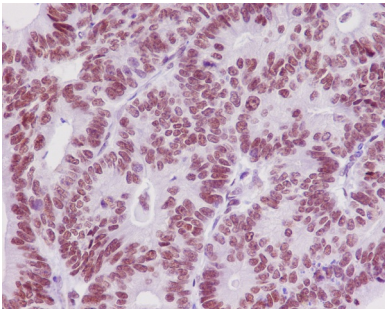
Immunohistochemical analysis of paraffin-embedded Human prostate cancer, using the Antibody at 1:100 dilution.



Immunohistochemical analysis of paraffin-embedded Human astrocytoma, using the Antibody at 1:100 dilution.



Immunohistochemical analysis of paraffin-embedded Mouse skeletal muscle - gastrocnemius , using the Antibody at 1:100 dilution.



Immunohistochemical analysis of paraffin-embedded human colon carcinoma, using TRAF6 Antibody.