

---

**Product Name: KAP1 Rabbit Monoclonal Antibody****Catalog #: AMRe83709**

For research use only.

**Summary**

|                      |   |
|----------------------|---|
| <b>Description</b>   | Recombinant rabbit monoclonal antibody  |
| <b>Host</b>          | Rabbit  |
| <b>Application</b>   | WB,IHC,ICC/IF,ICC,FC  |
| <b>Reactivity</b>    | Human,Mouse,Rat   |
| <b>Conjugation</b>   | Unconjugated  |
| <b>Modification</b>  | Unmodified  |
| <b>Isotype</b>       | IgG   |
| <b>Clonality</b>     | Monoclonal  |
| <b>Form</b>          | Liquid  |
| <b>Concentration</b> | 0.38mg/ml. The concentration of this product may be batch-dependent.                        |
| <b>Storage</b>       | Aliquot and store at -20°C (valid for 12 months). Avoid freeze/thaw cycles.                 |
| <b>Shipping</b>      | Ice bags  |
| <b>Buffer</b>        | Purified antibody in PBS with 0.05% sodium azide,0.05% protective protein and 50% glycerol. |
| <b>Purification</b>  | Affinity Purification   |

**Application**

|                         |   |
|-------------------------|---|
| <b>Dilution Ratio</b>   | WB 1:1000-1:5000,IHC 1:100-1:200,ICC/IF 1:50-1:200,ICC 1:50-1:200,FC 1:20-1:100 |
| <b>Molecular Weight</b> | Calculated MW: 89 kDa ; Observed MW: 110 kDa                                    |

**Antigen Information**

|                          |   |
|--------------------------|---|
| <b>Gene Name</b>         | KAP1  |
| <b>Alternative Names</b> | E3 SUMO-protein ligase TRIM28; KRAB-associated protein 1; KAP-1; KRAB-interacting protein 1; KRIP-1; Nuclear corepressor KAP-1; KAP1; TF1B; RNF96; TIF1B; TRIM28;;TIF1 beta |
| <b>Gene ID</b>           |   |
| <b>SwissProt ID</b>      | Q13263  |
| <b>Immunogen</b>         | A synthesized peptide derived from human TIF1 beta  |

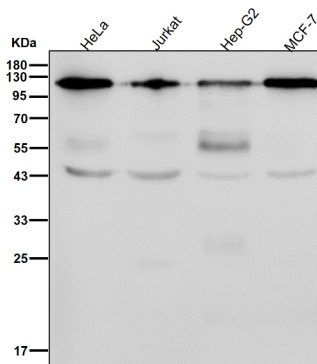
**Background**

Nuclear corepressor for KRAB domain-containing zinc finger proteins (KRAB-ZFPs). Mediates gene silencing by recruiting

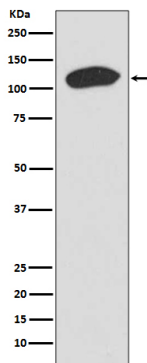
CHD3, a subunit of the nucleosome remodeling and deacetylation (NuRD) complex, and SETDB1 (which specifically methylates histone H3 at 'Lys-9' (H3K9me)) to the promoter regions of KRAB target genes. Enhances transcriptional repression by coordinating the increase in H3K9me, the decrease in histone H3 'Lys-9 and 'Lys-14' acetylation (H3K9ac and H3K14ac, respectively) and the disposition of HP1 proteins to silence gene expression.

## Research Area

## Image Data



All lanes use the Antibody at 1:5K dilution for 1 hour at room temperature.



Western blot analysis of KAP1 expression in HeLa cell lysate.