

**Product Name: GM130 Rabbit Monoclonal Antibody**  
**Catalog #: AMRe83706**



## Summary

<b>Production Name</b>	GM130 Rabbit Monoclonal Antibody
<b>Description</b>	Rabbit Monoclonal antibody
<b>Host</b>	Rabbit
<b>Application</b>	WB,IP,IHC,ICC,IF
<b>Reactivity</b>	Human,Mouse,Rat,Monkey,Cow,Dog

## Performance

<b>Conjugation</b>	Unconjugated
<b>Modification</b>	Unmodified
<b>Isotype</b>	IgG
<b>Clonality</b>	Monoclonal
<b>Form</b>	Liquid
<b>Storage</b>	Store at 4°C short term. Aliquot and store at -20°C long term. Avoid freeze/thaw cycles.
<b>Buffer</b>	Purified antibody in PBS with 0.05% sodium azide,0.05% BSA and 50% glycerol.
<b>Purification</b>	Affinity Purification

## Immunogen

<b>Gene Name</b>	GM130
<b>Alternative Names</b>	GM130; Gm130 autoantigen; GOLGA 2; Golga2; Golgi autoantigen; Golgin 95;;Golgin subfamily A member 2
<b>Gene ID</b>	
<b>SwissProt ID</b>	Q08379.A synthesized peptide derived from human Golgin subfamily A member 2

## Application

<b>Dilution Ratio</b>	WB:1:1000-1:2000,IP:1:20-1:50,IHC:1:100-1:200;IF:1:50-1:200,ICC:1:50-1:200
<b>Molecular Weight</b>	Calculated MW: 113 kDa ; Observed MW: 130 kDa

## Background

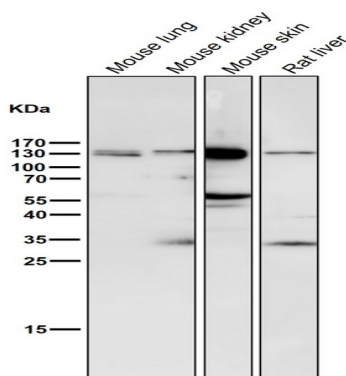
**Product Name: GM130 Rabbit Monoclonal Antibody**  
**Catalog #: AMRe83706**



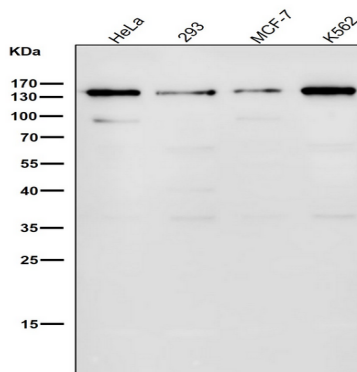
Golgi auto-antigen; probably involved in maintaining cis-Golgi structure. The Golgi apparatus, which participates in glycosylation and transport of proteins and lipids in the secretory pathway, consists of a series of stacked cisternae (flattened membrane sacs). Interactions between the Golgi and microtubules are thought to be important for the reorganization of the Golgi after it fragments during mitosis. This gene encodes one of the golgins, a family of proteins localized to the Golgi.

## Research Area

## Image Data

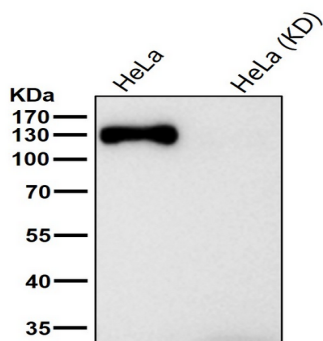


All lanes use the Antibody at 1:2K dilution for 1 hour at room temperature.

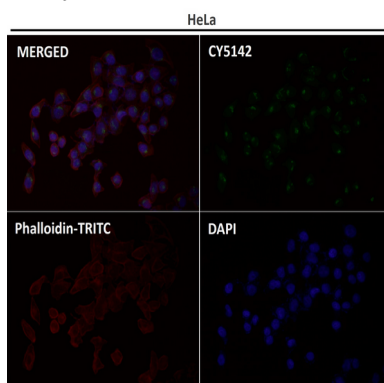


All lanes use the Antibody at 1:2K dilution for 1 hour at room temperature.

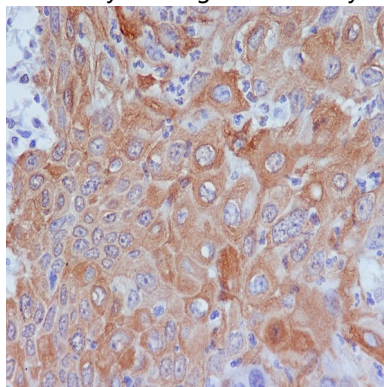
**Product Name: GM130 Rabbit Monoclonal Antibody**  
**Catalog #: AMRe83706**



All lanes use the Antibody at 1:1K dilution for 1 hour at room temperature.



Immunofluorescent analysis using the Antibody at 1:200 dilution.



Immunohistochemical analysis of paraffin-embedded human cervix carcinoma, using GM130 Antibody.

## Note

For research use only.