

---

**Product Name: SNF5 Rabbit Monoclonal Antibody****Catalog #: AMRe83702**

For research use only.

**Summary**

<b>Description</b>	Recombinant rabbit monoclonal antibody
<b>Host</b>	Rabbit
<b>Application</b>	WB,IP
<b>Reactivity</b>	Human,Mouse,Rat
<b>Conjugation</b>	Unconjugated
<b>Modification</b>	Unmodified
<b>Isotype</b>	IgG
<b>Clonality</b>	Monoclonal
<b>Form</b>	Liquid
<b>Concentration</b>	0.38mg/ml. The concentration of this product may be batch-dependent.
<b>Storage</b>	Aliquot and store at -20°C (valid for 12 months). Avoid freeze/thaw cycles.
<b>Shipping</b>	Ice bags
<b>Buffer</b>	Purified antibody in PBS with 0.05% sodium azide,0.05% protective protein and 50% glycerol.
<b>Purification</b>	Affinity Purification

**Application**

<b>Dilution Ratio</b>	WB 1:1000-1:2000,IP 1:20-1:50
<b>Molecular Weight</b>	44 kDa

**Antigen Information**

<b>Gene Name</b>	SNF5
<b>Alternative Names</b>	SMARCB1; BAF47; hSNF5; INI1; RDT; RTPS1; Sfh1p; SMARCB1; SNF5 homolog; SNF5L1; Snr1; SWI/SNF comp;SMARCB1
<b>Gene ID</b>	
<b>SwissProt ID</b>	Q12824
<b>Immunogen</b>	A synthesized peptide derived from human SMARCB1

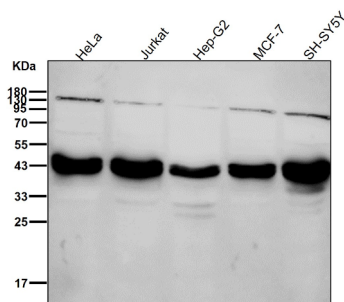
**Background**

The SWI-SNF complex is involved in the activation of transcription via the remodeling of nucleosome structure in an ATP-

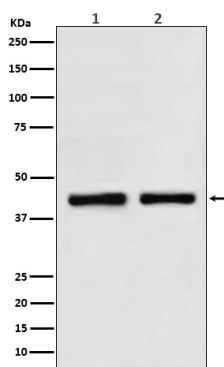
dependent manner. Brm (also designated SNF2 $\alpha$ ) and Brg-1 (also designated SNF2 $\beta$ ) are the ATPase subunits of the mammalian SWI-SNF complex.

## Research Area

## Image Data



All lanes use the Antibody at 1:2K dilution for 1 hour at room temperature.



Western blot analysis of SNF5 in (1) HeLa cell lysate; (2) K562 cell lysate.