

Product Name: SATB1 Rabbit Monoclonal Antibody**Catalog #: AMRe83694**

For research use only.

Summary

Description	Recombinant rabbit monoclonal antibody
Host	Rabbit
Application	WB,IHC,ICC/IF,ICC,FC,IP
Reactivity	Human,Mouse,Rat
Conjugation	Unconjugated
Modification	Unmodified
Isotype	IgG
Clonality	Monoclonal
Form	Liquid
Concentration	0.38mg/ml. The concentration of this product may be batch-dependent.
Storage	Aliquot and store at -20°C (valid for 12 months). Avoid freeze/thaw cycles.
Shipping	Ice bags
Buffer	Purified antibody in PBS with 0.05% sodium azide,0.05% protective protein and 50% glycerol.
Purification	Affinity Purification

Application

Dilution Ratio	WB 1:1000-1:2000,IHC 1:100-1:200,ICC/IF 1:50-1:200,ICC 1:50-1:200,FC 1:20-1:100,IP 1:20-1:50
Molecular Weight	Calculated MW: 86 kDa ; Observed MW: 100 kDa

Antigen Information

Gene Name	SATB1
Alternative Names	DNA binding protein SATB1; DNA-binding protein SATB1; SATB homeobox 1;;SATB1
Gene ID	
SwissProt ID	Q01826
Immunogen	A synthesized peptide derived from human SATB1

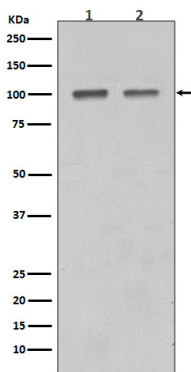
Background

SATB1 is a crucial silencing factor contributing to the initiation of X inactivation mediated by Xist RNA that occurs during

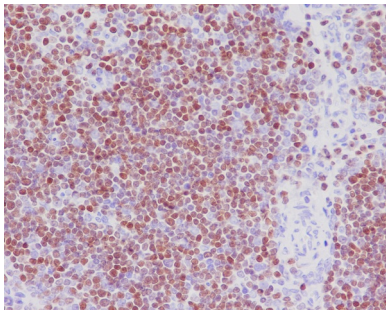
embryogenesis and in lymphoma. Binds to DNA at special AT-rich sequences, the consensus SATB1-binding sequence (CSBS), at nuclear matrix- or scaffold-associated regions. Thought to recognize the sugar-phosphate structure of double-stranded DNA. Transcriptional repressor controlling nuclear and viral gene expression in a phosphorylated and acetylated status-dependent manner, by binding to matrix attachment regions (MARs) of DNA and inducing a local chromatin-loop remodeling.

Research Area

Image Data



Western blot analysis of SATB1 in (1) Mouse thymus tissue lysate; (2) Jurkat cell lysate.



Immunohistochemical analysis of paraffin-embedded human thymus, using SATB1 Antibody.