

---

**Product Name: HMGB1 Rabbit Monoclonal Antibody****Catalog #: AMRe83691**

For research use only.

**Summary**

<b>Description</b>	Recombinant rabbit monoclonal antibody
<b>Host</b>	Rabbit
<b>Application</b>	WB,IHC,ICC/IF,ICC,FC
<b>Reactivity</b>	Human,Mouse,Rat
<b>Conjugation</b>	Unconjugated
<b>Modification</b>	Unmodified
<b>Isotype</b>	IgG
<b>Clonality</b>	Monoclonal
<b>Form</b>	Liquid
<b>Concentration</b>	0.19mg/ml. The concentration of this product may be batch-dependent.
<b>Storage</b>	Aliquot and store at -20°C (valid for 12 months). Avoid freeze/thaw cycles.
<b>Shipping</b>	Ice bags
<b>Buffer</b>	Purified antibody in PBS with 0.05% sodium azide,0.05% protective protein and 50% glycerol.
<b>Purification</b>	Affinity Purification

**Application**

<b>Dilution Ratio</b>	WB 1:1000-1:2000,IHC 1:100-1:200,ICC/IF 1:50-1:200,ICC 1:50-1:200,FC 1:20-1:100
<b>Molecular Weight</b>	25 kDa

**Antigen Information**

<b>Gene Name</b>	HMGB1
<b>Alternative Names</b>	HMGB1; HMG3; HMG1; SBP 1; Amphoterin;;HMGB1
<b>Gene ID</b>	
<b>SwissProt ID</b>	P09429
<b>Immunogen</b>	A synthesized peptide derived from human HMGB1

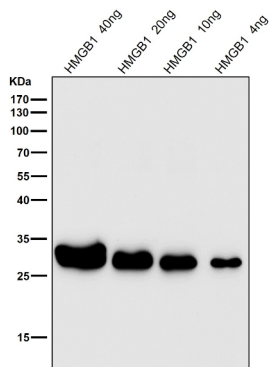
**Background**

Multifunctional redox sensitive protein with various roles in different cellular compartments. In the nucleus is one of the major chromatin-associated non-histone proteins and acts as a DNA chaperone involved in replication, transcription, chromatin

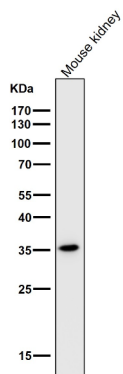
remodeling, V(D)J recombination, DNA repair and genome stability.

## Research Area

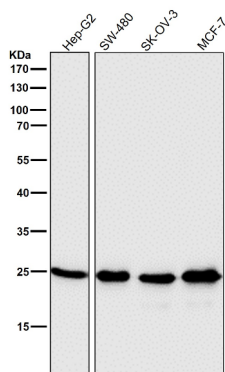
## Image Data



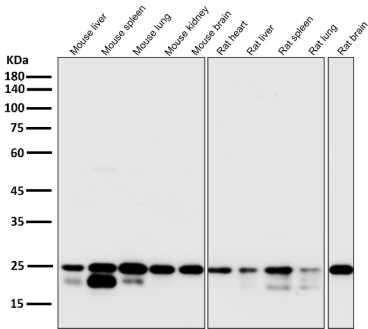
All lanes use the Antibody at 1:2K dilution for 1 hour at room temperature.



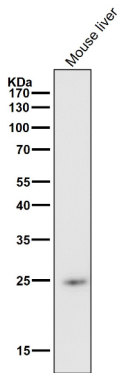
All lanes use the Antibody at 1:2K dilution for 1 hour at room temperature.



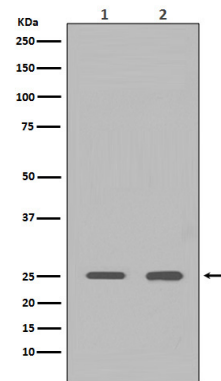
All lanes use the Antibody at 1:2K dilution for 1 hour at room temperature.



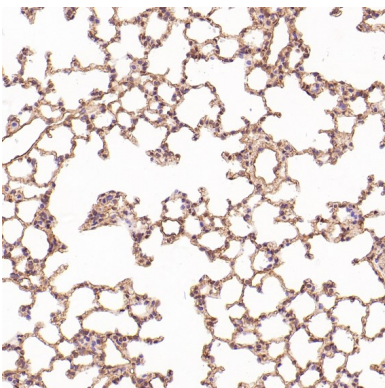
All lanes use the Antibody at 1:2K dilution for 1 hour at room temperature.



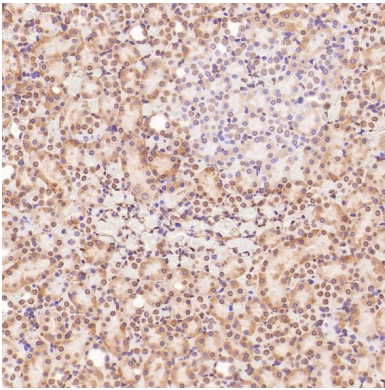
All lanes use the Antibody at 1:2K dilution for 1 hour at room temperature.



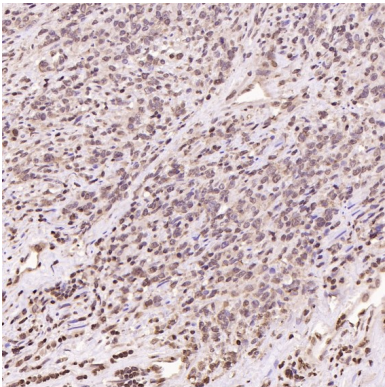
Western blot analysis of HMGB1 expression in (1)HeLa cell lysate; (2)Rat brain lysate.



Immunohistochemical analysis of paraffin-embedded Rat liver, using the Antibody at 1:200 dilution.



Immunohistochemical analysis of paraffin-embedded Rat kidney, using the Antibody at 1:200 dilution.



Immunohistochemical analysis of paraffin-embedded Human non-Hodgkin's lymphoma, using the Antibody at 1:100 dilution.