

Product Name: CCR9 Rabbit Monoclonal Antibody**Catalog #: AMRe83689**

For research use only.

Summary

Description	Recombinant rabbit monoclonal antibody
Host	Rabbit
Application	WB,ICC,FC
Reactivity	Human,Mouse,Rat
Conjugation	Unconjugated
Modification	Unmodified
Isotype	IgG
Clonality	Monoclonal
Form	Liquid
Concentration	0.53mg/ml. The concentration of this product may be batch-dependent.
Storage	Aliquot and store at -20°C (valid for 12 months). Avoid freeze/thaw cycles.
Shipping	Ice bags
Buffer	Purified antibody in PBS with 0.05% sodium azide,0.05% protective protein and 50% glycerol.
Purification	Affinity Purification

Application

Dilution Ratio	WB 1:1000-1:2000,ICC 1:50-1:200,FC 1:20-1:100
Molecular Weight	Calculated MW: 42 kDa ; Observed MW: 45 kDa

Antigen Information

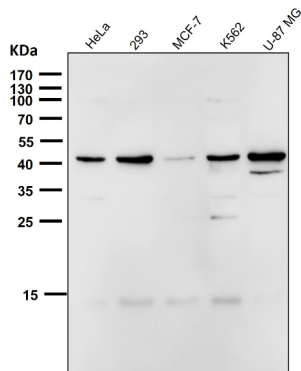
Gene Name	CCR9
Alternative Names	G-protein coupled receptor 28; GPR-9-6; CDw199;CCR9;CCR9
Gene ID	
SwissProt ID	P51686
Immunogen	A synthesized peptide derived from human CCR9

Background

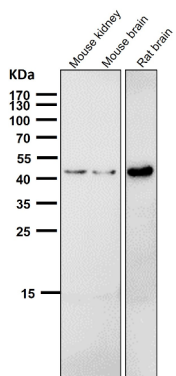
Receptor for chemokine SCYA25/TECK. Subsequently transduces a signal by increasing the intracellular calcium ions level. (Microbial infection) Alternative coreceptor with CD4 for HIV-1 infection.

Research Area

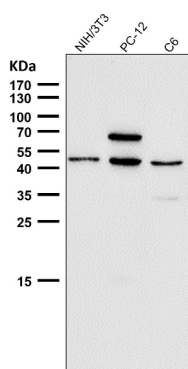
Image Data



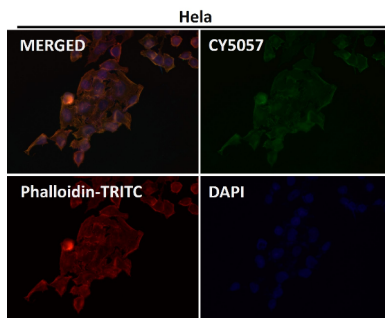
All lanes use the Antibody at 1:1K dilution for 1 hour at room temperature.



All lanes use the Antibody at 1:1K dilution for 1 hour at room temperature.



All lanes use the Antibody at 1:1K dilution for 1 hour at room temperature.



Immunofluorescent analysis using the Antibody at 1:50 dilution.