

Product Name: Bcl-XL Rabbit Monoclonal Antibody**Catalog #: AMRe83686**

For research use only.

Summary

Description	Recombinant rabbit monoclonal antibody
Host	Rabbit
Application	WB,IHC,ICC/IF,ICC,FC,IP
Reactivity	Human,Mouse,Rat
Conjugation	Unconjugated
Modification	Unmodified
Isotype	IgG
Clonality	Monoclonal
Form	Liquid
Concentration	0.34mg/ml. The concentration of this product may be batch-dependent.
Storage	Aliquot and store at -20°C (valid for 12 months). Avoid freeze/thaw cycles.
Shipping	Ice bags
Buffer	Purified antibody in PBS with 0.05% sodium azide,0.05% protective protein and 50% glycerol.
Purification	Affinity Purification

Application

Dilution Ratio	WB 1:1000-1:2000,IHC 1:100-1:200,ICC/IF 1:50-1:200,ICC 1:50-1:200,FC 1:20-1:100,IP 1:20-1:50
Molecular Weight	26 kDa

Antigen Information

Gene Name	Bcl-XL
Alternative Names	Apoptosis regulator Bcl-X; BLC2L; Bcl-2-like 1 protein bclxl; BCL2L; BCL2L1; BCLX;;Bcl 2 L1
Gene ID	
SwissProt ID	Q07817
Immunogen	A synthesized peptide derived from human Bcl 2 L1

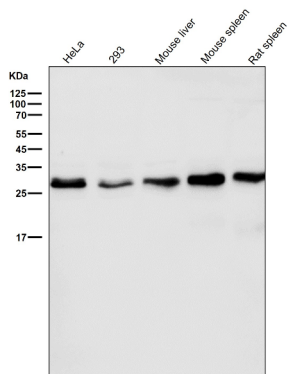
Background

Potent inhibitor of cell death. Inhibits activation of caspases. Appears to regulate cell death by blocking the voltage-dependent

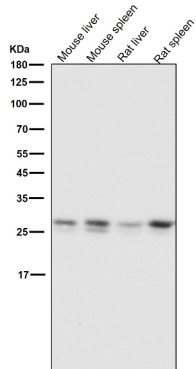
anion channel (VDAC) by binding to it and preventing the release of the caspase activator, CYC1, from the mitochondrial membrane. Also acts as a regulator of G2 checkpoint and progression to cytokinesis during mitosis.

Research Area

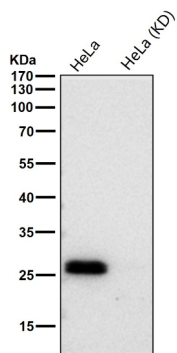
Image Data



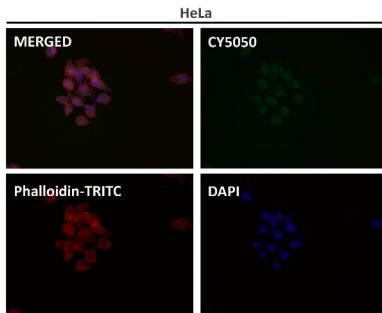
All lanes use the Antibody at 1:2K dilution for 1 hour at room temperature.



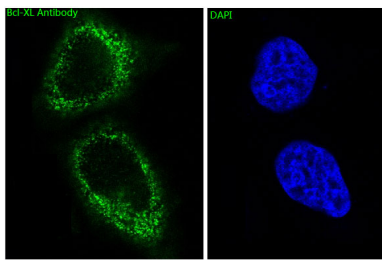
All lanes use the Antibody at 1:2K dilution for 1 hour at room temperature.



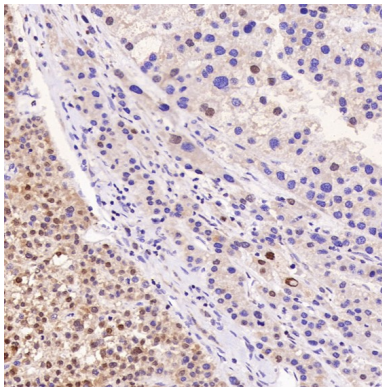
All lanes use the Antibody at 1:1K dilution for 1 hour at room temperature.



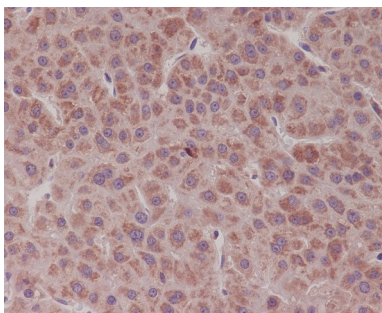
Immunofluorescent analysis using the Antibody at 1:50 dilution.



Immunofluorescent analysis of HeLa cells, using Bcl-XL Antibody .



Immunohistochemical analysis of paraffin-embedded Human liver cancer, using the Antibody at 1:200 dilution.



Immunohistochemical analysis of paraffin-embedded human liver cancer, using Bcl-XL Antibody.